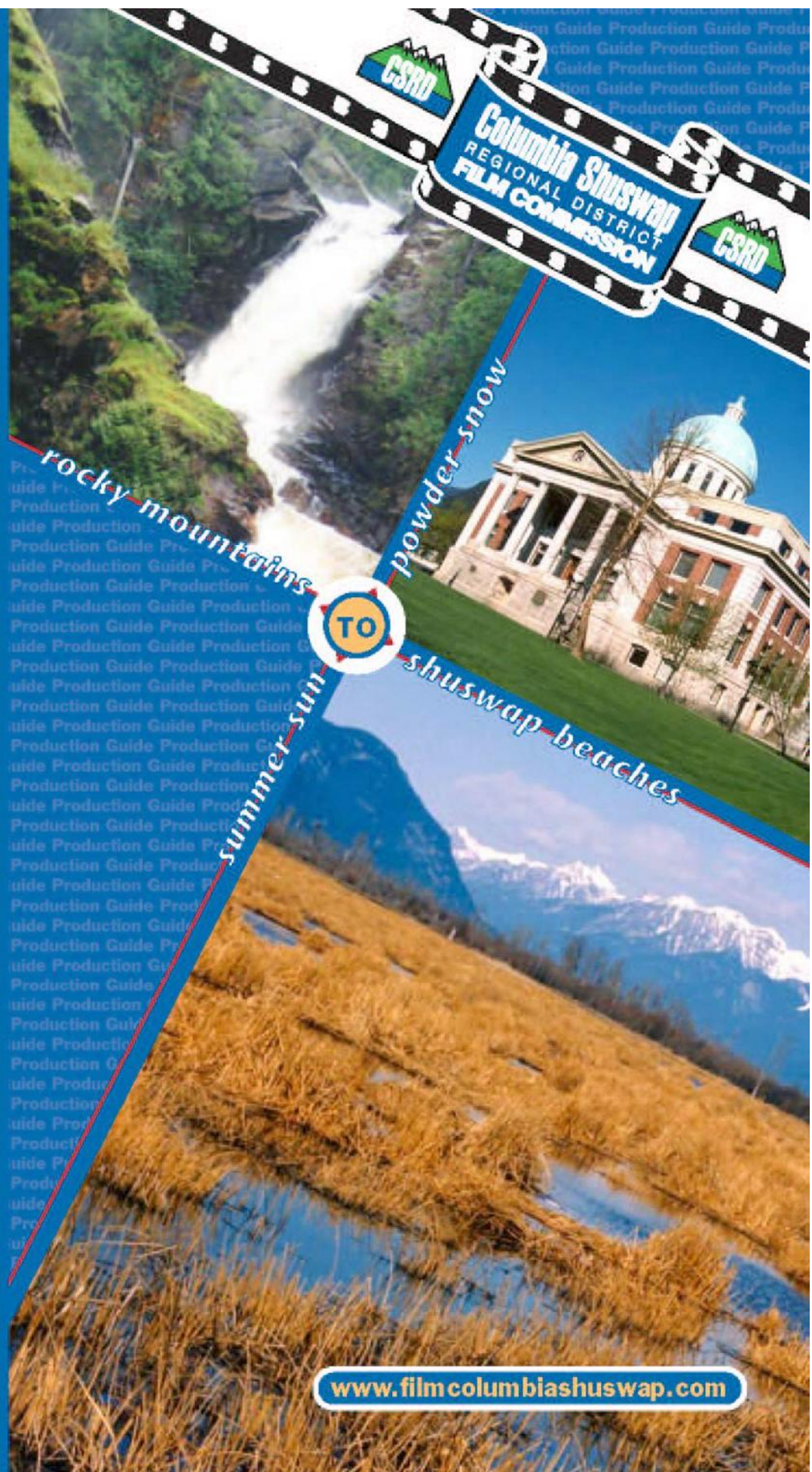


Production Guide



Columbia Shuswap
REGIONAL DISTRICT
FILM COMMISSION



rocky mountains

powder snow



summer sun

shuswap beaches

www.filmcolumbiashuswap.com



Adelheid Bender
Film Commissioner
Columbia Shuswap Film Commission
Box 978, 781 Marine Park Drive NE
Salmon Arm, British Columbia
Canada V1E 4P1
Phone: 250 832-8194
Fax: 250 832-3375
Email: abender@csrd.bc.ca
Website: www.filmcolumbiashuswap.com

WELCOME FROM THE FILM COMMISSIONER

The Columbia Shuswap Film Commission is pleased to welcome you to the most diversified area within the Province of British Columbia....the Columbia Shuswap Regional District.

Our scenery is breathtaking, featuring alpine meadows, mountains and glaciers, the magnificent Canadian Rocky Mountains, lakes, rivers, waterfalls, suburban and industrial settings, forests, dams, western towns, and quaint villages. The Columbia Shuswap has been the film location for a wide variety of commercials, videos, documentaries, TV productions and feature films including 'X-Men 2', 'Double Jeopardy', 'The Mole II (UK)' and 'The Barber'.

Our services include scouting, location photo database, one stop film registration and licensing requirements, Government and other regulatory agencies liaison, research and budget aid, accommodation and amenities assistance, on location service for last minute crisis resolution, community liaison, casting and talent assistance, support service price negotiation, script breakdown and ongoing support.

The Columbia Shuswap Film Commission is ready and willing to help you, and all our services are free. Check out the thousands of locations at our website: www.filmcolumbiashuswap.com

Adelheid



Credits: Source for Government regulations, studio and agency information & the BC Film Commission. www.bcfilmcommission.com

*Note: Every effort has been made to ensure the accuracy of the information contained in this guide. The Columbia Shuswap Film Commission is not responsible for any errors or omissions.

Printed in Canada



Distances

Salmon Arm to:

Kelowna International Airport	99 km / 61.5 miles	1 hr 25 min
Kamloops Airport	123 km / 76.7 miles	1 hr 43 min
Vancouver International Airport	471 km / 292.8 miles	5 hr 9 min
Calgary International Airport	521 km / 323.8 miles	6 hr 21 min

Banff, Alberta	353 km / 212 miles
Calgary, Alberta	481 km / 289 miles
Edmonton, Alberta	856 km / 514 miles
Jasper, Alberta	495 km / 297 miles
Seattle, Washington	520 km / 312 miles
Vancouver via Coquihala Hwy	411 km / 247 miles
Vancouver via Fraser Canyon	479 km / 288 miles
Whistler via Duffy Lake Road	350 km / 210 miles
Whistler via Fraser Canyon	531 km / 319 miles

TAX INCENTIVES

Tax Credits

- Are applied to accredited qualified labour costs
- May be combined
- Each tax credit program has specific criteria that must be met in order to qualify

Foreign and Domestic productions in British Columbia can access a variety of provincial and federal tax credit programs and if eligibility requirements are met, a producer can combine them to access exceptional savings.

TAX CREDITS AVAILABLE TO FOREIGN FILM AND TELEVISION PRODUCERS

British Columbia Tax Credits

The British Columbia Production Services Tax Credit (PSTC) encourages film, television and animation production in BC and can be accessed by a broad range of foreign productions.

There are three components:

1. The basic PSTC tax credit is 18% of accredited qualified BC labour expenditures effective January 1, 2005.
2. The new REGIONAL tax credit is 6% of accredited qualified BC labour expenditures.
3. The new DIGITAL ANIMATION or VISUAL EFFECTS tax credit is 15% of accredited qualified BC labour expenditures.

For more information for British Columbia's process, eligibility and time lines contact the program administrator:

British Columbia Film: (604) 736-7997
email: bcf@bcfilm.bc.ca

Canadian Federal Tax Credit

The Canadian Federal Government's Film or Video Production Services Tax Credit (PSTC) is primarily for foreign production and has been increased to 16% of Canadian labour costs from 11%.

For more information on Canadian federal tax credit contact:

(CAVCO) Canadian Audio-Visual Certification Office:
(888) 433-2200 or (613) 946-7600
web: www.pch.gc.ca/cavco

*Source: BC Film Commission

PROFESSIONAL ORGANIZATIONS

Academy of Canadian Cinema and Television

Telephone: 604 684-4528 Fax: 604 684-4574 Email: info@academy.ca www.academy.ca

Alliance of Motion Picture and TV Producers (AMPTP)

Telephone: 604 642-0300 Fax: 604 642-0305 Email: dcott@shaw.ca www.amptp.org

Association of Film Commissions International

www.afci.org

British Columbia Film

Telephone: 604 736-7997 Fax: 604 736-7290 Email: bcf@bcfilm.bc.ca www.bcfilm.bc.ca

BC Institute of Film Professionals

Telephone: 604 291-6525 Fax: 604 291-2551 Email: info@bcifp.com www.bcifp.com

Canadian Bar Association, Entertainment Law Section

Telephone: 604 443-7135 Fax: 604 683-5214 Email: Juliet.smith@fmc-law.com

Canadian Film and Television Production Association (CFTPA) BC Branch

Telephone: 604 682-8619 Fax: 604 684-9294 Email: vancouver@cftpa.ca www.cftpa.ca

Cineworks Independent Filmworks Society

Telephone: 604 685-3841 Fax: 604 685-9685 Email: info@cineworks.ca www.cineworks.ca

Commercial Producers Association of Western Canada (CPAWC)

Telephone: 604 296-2622 Fax: 604 296-2672 Email: info@cpawc.com www.cpawc.com

Documentary Organization of Canada

Telephone: 416 559-3844 Email: execdir@docorg.ca www.docorg.ca

Documentary Organization of Canada – Vancouver

Email: cifcvancouver@canada.com www.docbc.org

Motion Picture Production Industry Association of British Columbia (MPPIA)

Telephone: 604 983-5980 Fax: 604 983-5981 Email: info@mppia.com www.mppia.com

Moving Pictures – Canadian Films on Tour

Telephone: 604 681-4549 Fax: 604 681-4946 Email: info@movingpictures.ca www.movingpictures.ca

New Media BC

Telephone: 604 739-9878 Fax: 604 739-9819 Email: info@newmediabc.com www.newmediabc.com

Praxis Centre for Screenwriters

Telephone: 604 268-7880 Fax: 604 268-7882 Email: praxis@sfu.ca www.praxisfilm.com

Regional Film Commissioners Association of British Columbia

www.filmbcregions.com

Safety and Health in Arts Production and Entertainment (SHAPE)

Telephone: 604 733-4682 Fax: 604 733-4692 Email: info@shape.bc.ca www.shape.bc.ca

Society for the Prevention of Cruelty to Animals (SPCA) B.C.

Telephone: 604 681-7271 Fax: 604 681-7022 Email: bbusch@sPCA.bc.ca www.sPCA.bc.ca

Vancouver International Film Festival

www.viff.org

Women in Film & Video, Vancouver Chapter

Telephone: 604 685-1152 Fax: 604 685-1124 Email: info@womeninfilm.ca www.womeninfilm.ca

LABOUR UNIONS & GUILDS

ACFC West, the Association of Canadian Film Craftspeople, Local 2020 Communication, Energy, and Paperworkers Union of Canada

Telephone: 604 299-2232 Fax: 604 299-2243 Email: info@acfcwest.com www.acfcwest.com

BC Council of Film Unions

Telephone: 604 983-5531 Fax: 604 983-5539 Email: bcfilmunions@telus.net www.bccfu.com

Directors Guild of Canada – BC District Council

Telephone: 604 688-2976 Fax: 604 688-2610 Email: paltilia@dgcdbc.com www.dgcdbc.com

I.A.T.S.E. Local 669 (International Alliance of Theatrical Stage Employees – International Photographers Guild)

Telephone: 604 983-5580 Fax: 604 983-5579 Email: camera@ia669.com www.ia669.com

I.A.T.S.E. Local 891 (International Alliance of Theatrical Stage Employees – Production Technicians)

Telephone: 604-664-8912 Fax: 604 298-3456 Email: dustyk@iatse.com www.iatse.com

Teamsters Union Local No. 155

Telephone: 604 876-8898 Fax: 604 873-1595 Email: team155@teamsters155.org www.teamsters155.org

Union of B.C. Performers

Telephone: 604 689-0727 ext. 2254 Fax: 604 689-1145 Email: Lesley.brady@ubcp.com www.ubcponline.com

Vancouver Musicians Association Local 145 American Federation of Musicians of USA and Canada

Telephone: 604 737-1110 Fax: 604 734-3299 Email: wmorris@vma145.ca www.vma145.ca

Writers Guild of Canada

Telephone: 416 979-7907 Fax: 416 979-9273 Email: info@wgc.ca www.wgc.ca

For labour regulations and agencies go to the BC Film Commission website:

www.bcfilmcommission.com/production/production_guide

Useful Links:

Reel West Digest – directory of film production equipment and services in Western Canada

www.reelwest.com

Small Business BC – Information on starting a new BC company

www.smallbusinessbc.ca

Tourism BC

www.hellobc.com

604 660-3862

Canadian Talent in LA

www.canadiantalentla.com

GOVERNMENT CONTACTS

BC Building Corporation

Telephone: 250 952-8876 Fax 250 952-8822 Email: vgullekson@bccbc.bc.ca www.bccbc.bc.ca

BC Ferries

Telephone: 250 978-1114 Fax: 250 480-7296 Email: david.mcwalter@bcferries.com www.bcferries.com

BC Film Classification Office (FCO)

Telephone: 604 320-1667 Fax: 604 320-1655 Email: contact@bcfilmclass.com www.bcfilmclass.com

The Film Classification Office regulates the public exhibition, rental and distribution of films and videos in B.C. All films shown publicly and all videos sold or rented through video outlets must be viewed and classified by the FCO. The FCO also licenses video outlets, is responsible for maintaining community standards in film and video productions distributed in B.C. and monitors legislation, programs and court cases relating to film classification, censorship and obscenity in Canada.

BC Film Commission

Telephone: 604 660-2732 Fax: 604 660-4790 Email: info@bcfilmcommission.com www.bcfilmcommission.com

BC Parks

Telephone: 604 582-5335 Fax: 604 930-7119 Email: aan.guercio@gov.bc.ca www.env.gov.bc.ca/bcparks

BC Parks – Permits

www.env.gov.bc.ca/pasb/application_pdfs/film_perm_app.pdf

Canada Customs and Revenue Agency

Temporary importation of goods. www.cbsa-asfc.gc.ca

Telephone: 604 666-0879 Fax : 604 666-7027 Email: cara.foxton@ccra-adrc.gc.ca

Consumer Taxation Branch – Provincial Sales Tax (PST)

Telephone: 604 660-4583 Fax: 604 660-1104 www.rev.gov.bc.ca/ctb

Employment Standards – Children in Film

Telephone: 604 660-2097 Fax: 604 660-7047 www.labour.gov.bc.ca/esb/chldfilm

Employment Standards – Talent Agencies

www.labour.gov.bc.ca/esb/talent/list.htm

Environment Canada

www.weatheroffice.ec.gc.ca

Human Resources & Skills Development Canada – Work Permits

Telephone: 604 687-7803 Fax: 604 666-7731

Citizenship & Immigration Canada – www.cic.gc.ca 1-888-242-2100

Minister of Agriculture and Lands

Permits to film on Crown Land and Water

Telephone: 604 586-4422 Fax: 604 586-4434 elisabeth.eldridge@gov.bc.ca www.agf.gov.bc.ca

Ministry of Environment

Permits to film in protected areas

Tom Blackbird, Ecosystem Officer

Telephone: 604 582-5200 Fax: 604 930-7719 tom.blackbird@gov.bc.ca

Ministry of Forests

Revelstoke Forest District

David Raven 250 837-7611 dave.raven@gov.bc.ca

Okanagan Shuswap District

Ron Racine 250 558-1700 ron.racine@gov.bc.ca

Kamloops Forest District

Shane Berg 250 371-6501 shane.berg@gov.bc.ca

Ministry of Transportation – Lower Mainland

Lorna Leslie Tel: 604-660-9701 Fax 604 680-9736 lorna.leslie@gov.bc.ca or www.th.gov.bc.ca/filming-events

Highways – Columbia Shuswap Regional District Electoral Areas ‘B’

Contact: Glen Ollick
Telephone: 250 837-8400

Highways – Electoral Areas ‘C’, ‘D’ & ‘F’

Contact: Peter Gooch
Telephone: 250 833-3371
Main office: 250 503-3664, Vernon

Highways – Regional Okanagan Shuswap Office

Contact: Grant Lachmuth
Telephone: 250 712-3660

Road Report Information

www.th.gov.bc.ca/bchighwys/roadreports/north-south-htm

Mount Revelstoke & Glacier National Parks

Telephone: 250 837-7500 Fax: 250 837-7536

Telefilm Canada

Telephone: 604 666-1566 Fax: 604 666-7754 www.telefilm.gc.ca

Telefilm Canada was established to support independent Canadian productions and administers development, production, marketing and distribution programs in feature film, television and multimedia. Projects must meet Canadian content requirements. Telefilm also invests in co-ventures and twinned productions. Their participation in co-productions is limited to the Canadian portion of the budget.

Workers Compensation Board

Employer Service Centre

Telephone: 604 244-6181 Fax: 604 244-6490 www.worksafebc.com

LOWER MAINLAND STUDIOS (Purpose Built)

The Bridge Studios

2400 Boundary Rd. Burnaby BC
Tel: 604 482-2000 Fax: 604 482-2007
Email: ron@bridgestudios.com www.bridgestudios.com

Canadian Motion Picture Park

8085 Glenwood Dr. Burnaby BC
Tel: 604 435-2000 Fax: 604 433-1405
Email: info@cmppstudios.com www.cmppstudios.com

Eagle Creek Studios

4210 Phillips Ave. Burnaby, BC
Tel: 604 788-2229

FastCat Studio

303 E. Esplanade North Vancouver, BC
Tel: 604 254-4121
Email: info@iwlfilm.com www.iwlfilm.com

Mammoth Studios

2820 Underhill Ave. Burnaby BC
Tel: 604 698-5555 Fax: 604 983-5554
Email: richardw@bosadev.com www.mammothstudios.ca

MJA Studio

4961 Byrne Rd. Burnaby, BC
Tel: 604 433-1400 Fax: 604 433-1405
Email: wolfisachsen@hotmail.com www.mjastudios.com

North Shore Studios

555 Brooksbank Ave Vancouver, BC
Tel: 604-983-5555 Fax: 604-5554
Email: petrel@nsstudios.com www.nsstudios.com

Vancouver Film Studios Ltd .

3500 Cornett Rd. Vancouver, BC
Tel: 604 453-5000 Fax: 604 453-5045
Email: info@vancouverfilmstudios.com www.vancouverfilmstudios.com

Warehouse Conversion Stages

Aja Tan Studios

1600 East Railway Street, North Vancouver BC.
Tel: 604 980-8363
Email: ajatan@axion.net www.ajatan.com

Pacific National Exhibition

2900 East Hastings St., Vancouver, BC
Tel: 604 252-3534 Fax: 604 251-7761
Email: filming@pne.ca www.pne.bc.ca

SIM Studio

11545 Kingston St. Maple Ridge, BC
Tel: 604 460-8881 Fax: 604 460-8387

FX and Broadcast Stages

BCIT Broadca st

3700 Willingdon Ave., Burnaby, BC
Tel: 604 432-8403 Fax: 604 432-1792
Email: Robert_nason@bcit.ca www.bcit.ca

Bear Studios

53 East 6th Ave, Vancouver, BC
Tel: 604 873-4848 Fax: 604 873-0674
Email: jamie@bear-studios.com www.bear-studios.com

First Avenue Studio

1st Avenue & Gilmore St., Burnaby, BC
Tel: 604 240-5536 Fax: 604 298-6492
Email: fristavestudio@telus.net www.firstavestudio.com

Global

7850 Enterprise St., Burnaby, BC
Tel: 604 422-6404 Fax: 604 422-6427
Email: kpinnell@globaltv.ca www.canada.com/vancouver

Knowledge Network

4355 Mathissi Place, Burnaby, BC
Tel: 604 431-3160
Email: jeani@knowledgenetwork.ca www.knowledgenetwork.ca

Lake City Studios

3188 Thunderbird Cres. Burnaby, BC
Tel: 778 858-2918
Email: Russell@canamimportique.com www.canamimportique.com

SFX Studio Inc

4429 Jueau St., Burnaby, BC
Tel: 604 205-5142 Fax: 604 205-5143 www.sfxstudio.com

Stage 6

65 East 6th Ave. Vancouver, BC
Tel: 604 873-4807 Fax: 604 873-0674
Email: bookings@stage6.ca www.stage6.ca

Thomas Studios

140 - 144 Riverside Drive, North Vancouver, BC
Tel: 604 929-5455 Fax: 604 929-6653
Email: sales@thomasfx.com www.thomasfx.com

CANADIAN HOLIDAYS – 2006

New Year's Day	January 1
April	April 14
Easter Sunday	April 16
Victoria Day	May 22
Canada Day	July 1
BC Day	August 7
Labour Day	September 4
Thanksgiving Day	October 9
Remembrance Day	November 11
Christmas Day	December 25
Boxing Day	December 26

FIRST NATIONS – INDIAN BANDS

These are the First Nations with all or part of their reserves within the Columbia Shuswap Regional District boundaries.

Adams Lake Indian Band

Chief Ron Jules
Box 588, Hillcrest Road
Chase BC V0E 1M0 250 679-8841 Fax: 250 679-8813

Little Shuswap Lake Indian Band

Chief Felix Arnouse
Box 1100, 1886 Little Shuswap Lake Road W
Chase BC V0E 1M0 250 679-3203 Fax: 250 679-3220

Neskonlith Indian Band

Chief Arthur Anthony
Box 608, #33 Chief Neskonlith Road
Chase BC V0E 1M0 250 679-3295 Fax: 250 679-5306

Okanagan Indian Band

Chief Lyle Brewer
12420 Westside Road
Vernon BC V1T 7Z3 250 542-4328 Fax: 250 542-4990

Sapallumcheen Indian Band

Chief Gloria Morgan
Box 460, 5775 Old Vernon Road
Enderby BC V0E 1V0 250 838-6496 Fax: 250 838-2131

Columbia Lake First Nations

Windermere BC V0B 2L0 250 342-6301 Fax: 250 342-9693

Shuswap First Nations

Invermere BC V0A 1K0 250 342-6361 Fax: 250 342-2948

CLIMATIC DATA

TEMPERATURE

Daily Maximum Temperature (Celcius)

	Jan	Feb	Mar	Apr	May	Jun	July	Aug	Sept	Oct	Nov	Dec
Revelstoke	-2.6	0.7	6.0	13.1	19.2	22.7	25.3	24.6	17.8	10.3	3.1	-1.6
Salmon Arm	-1.5	2.9	8.2	14.7	20.1	24.3	27.4	27.2	20.3	12.8	4.5	-0.3
Sicamous	-2.6	1.6	6.6	13.5	19.3	23.2	26.6	25.9	19.4	11.4	3.8	-0.5

Daly Minimum Temperature (Celcius)

	Jan	Feb	Mar	Apr	May	Jun	July	Aug	Sept	Oct	Nov	Dec
Revelstoke	-8.7	-6.3	-2.8	0.8	5.5	9.4	11.1	10.8	6.8	2.5	-1.8	-6.6
Salmon Arm	-7.8	-4.9	-3.2	1.4	5.6	9.6	11.3	10.9	6.7	2.5	-1.8	-6.1
Sicamous	-7.2	-4.5	-1.9	2.0	6.9	11.1	13.1	12.5	8.6	4.0	-1.0	-4.5

Daily Mean Temperature (Celcius)

	Jan	Feb	Mar	Apr	May	Jun	July	Aug	Sept	Oct	Nov	Dec
Revelstoke	-5.6	-2.7	1.6	7.0	12.4	16.0	18.2	17.7	12.4	6.5	0.7	-4.0
Salmon Arm	-4.6	-1.0	3.0	8.1	12.9	17.0	19.4	19.1	13.6	7.6	1.4	-3.1
Sicamous	-5.0	-1.4	2.4	7.8	13.1	17.1	20.0	19.2	14.0	7.7	1.5	-2.6

PRECIPITATION

Rainfall (mm)

	Jan	Feb	Mar	Apr	May	Jun	July	Aug	Sept	Oct	Nov	Dec
Revelstoke	14.5	20.5	42.4	49.2	56.2	73.1	66.5	60.1	64.8	77.4	60.4	26.8
Salmon Arm	9.5	17.2	26.6	27.4	34.0	41.3	42.5	36.4	41.0	40.0	35.5	20.2
Sicamous	10.4	14.7	25.6	31.4	50.9	64.0	45.6	53.2	56.0	48.9	38.9	17.9

Snowfall (cm)

	Jan	Feb	Mar	Apr	May	Jun	July	Aug	Sept	Oct	Nov	Dec
Revelstoke	133.0	86.5	28.4	4.3	0.0	0.0	0.0	0.0	0.0	1.4	60.1	131.6
Salmon Arm	51.1	24.1	8.1	1.1	0.0	0.0	0.0	0.0	0.0	1.3	22.6	51.3
Sicamous	66.6	33.7	11.1	0.6	0.0	0.0	0.0	0.0	0.0	2.1	26.6	63.5

Days with Rain

	Jan	Feb	Mar	Apr	May	Jun	July	Aug	Sept	Oct	Nov	Dec
Revelstoke	4	6	12	13	14	15	13	12	12	15	13	6
Salmon Arm	3	6	9	10	11	11	10	9	11	11	11	6
Sicamous	3	5	9	9	12	12	8	9	10	12	10	5

Days with Snow

	Jan	Feb	Mar	Apr	May	Jun	July	Aug	Sept	Oct	Nov	Dec
Revelstoke	18	14	8	2	0	0	0	0	-	-	11	18
Salmon Arm	13	7	3	-	0	0	0	0	0	-	5	12
Sicamous	14	8	4	0	0	0	0	0	0	0	5	14

Sunrise/Sunset

	Jan	Feb	Mar	Apr	May	Jun	July	Aug	Sept	Oct	Nov	Dec
Revelstoke	7:48 16:16	7:04 17:10	6:06 17:58	5:58 19:49	4:23 20:36	4:39 20:36	4:57 21:00	5:41 21:13	6:28 19:06	7:16 18:00	7:04 16:05	7:49 15:47
Salmon Arm	7:55 16:21	7:09 17:15	6:11 18:03	6:03 19:54	5:10 20:39	4:44 21:13	5:02 21:05	5:46 20:18	6:33 19:11	7:21 18:05	7:14 16:10	7:54 15:48
Sicamous	7:54 16:18	7:09 17:12	6:09 18:01	6:00 19:53	5:05 20:41	4:40 21:57	4:58 21:05	5:43 20:17	6:32 19:10	7:20 18:02	7:14 16:07	7:54 15:48

METRIC CONVERSION

To Convert	Into	Multiply by
Centimeters	Inches	.394
	Feet	.0328
	Meters	.01
Meters	Centimeters	100
	Feet	3.281
	Inches	39.37
	Kilometers	.001
	Miles	.0006214
Kilometers	Millimeters	1000
	Yards	1.093
	Feet	3281
	Meters	1000
	Miles	.621
Inches	Yards	1093
	Centimeters	2.54
	Feet	.833
	Meters	.0254
Yards	Yards	.0278
	Inches	36
	Feet	3
	Meters	.914
Miles	Miles	.0005682
	Feet	5,280
	Yards	1,760
	Kilometers	1.609
Liters	Cups	4.226
	Pints	2.113
	Gallons	.264
	Milliliters	1000
	Quarts	1.057
Grams	Ounces	.035
	Pounds	.0022
	Kilograms	.001
Kilograms	Grams	1,000
	Ounces	35.274
	Pounds	2.205
Pints	Liters	.473
	Quarts	.5
	Gallons	.125
Quarts	Pints	2
	Liters	.946
	Gallons	.25
Gallons	Pints	8
	Liters	3.785
	Quarts	4
Ounces	Grams	28.35
	Pounds	.0625
	Kilograms	.028
Pounds	Grams	453.59
	Ounces	16
	Kilograms	.454

TEMPERATURE

To convert Celsius into Fahrenheit (multiply degrees C x 2) + 30

Example: 20 Celsius x 2 + 30 = 70° Fahrenheit

DRIVING SPEED

On most urban streets in British Columbia the speed limit is 50 km/h which equates to 30 mph.

On rural highways the speed limit is usually 80 or 90 km/h which equates to 50 and 55 mph.

The speed on major highways is 100 or 110 km/h which equates to 65 and 70 mph.

MUNICIPALITIES & REGIONAL DISTRICT

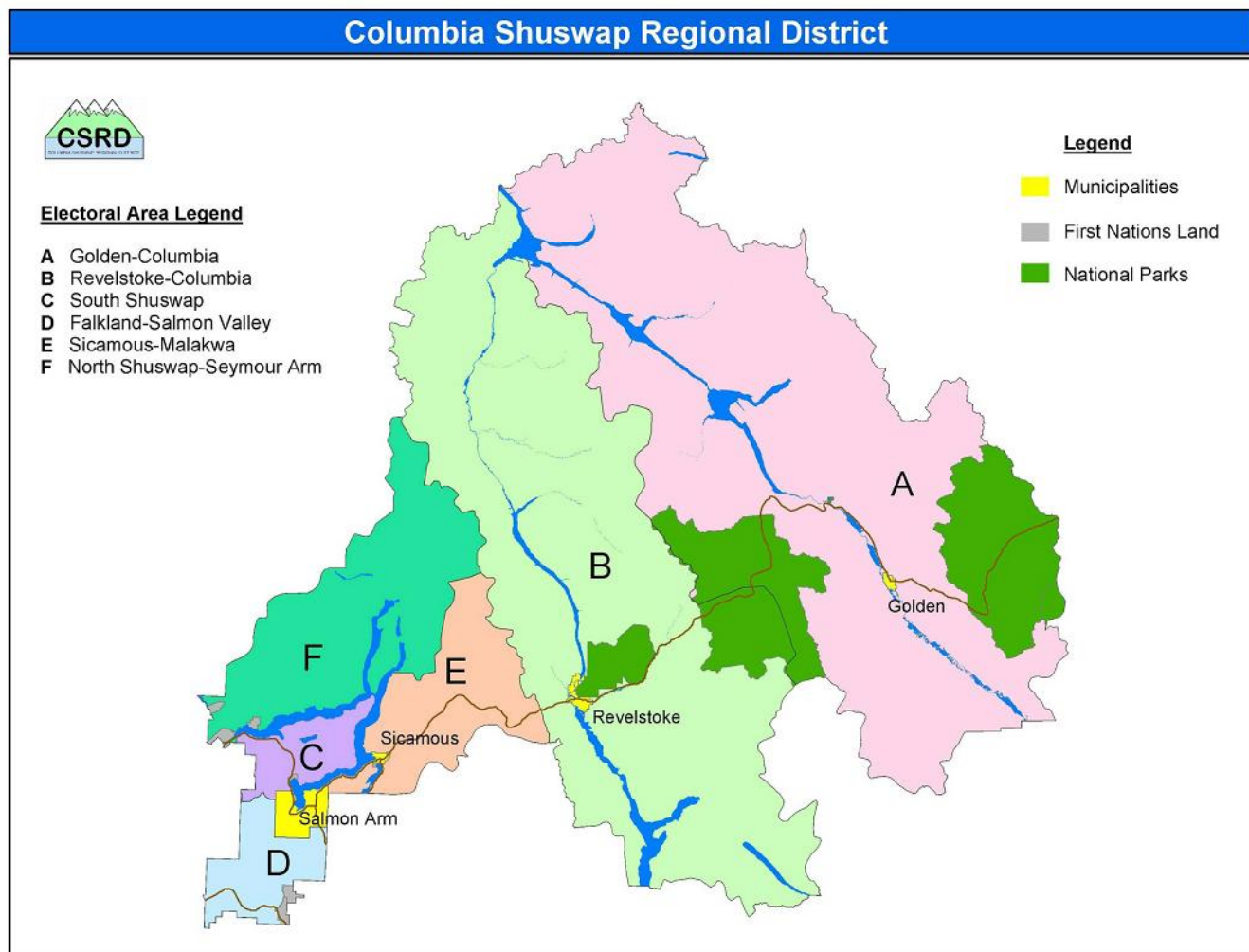
Columbia Shuswap Regional District

781 Marine Park Drive NE, Box 978, Salmon Arm, BC V1E 4P1

Phone: 250 832-8194 Fax: 250 832-3375 www.filmcolumbiashuswap.com

Contact: Adelheid Bender, Film Commissioner abender@csrd.bc.ca

The Columbia Shuswap Regional District is located in the heart of the scenic southern interior of British Columbia on the Trans Canada Highway between Calgary and Vancouver. The Regional District is situated on the northern end of the Kootenay and Okanagan Valleys. The scenery is breathtaking with a range of visual settings. Alpine mountains, glaciers and the magnificent Canadian Rocky Mountains dominate the vistas in the eastern half of the Regional District. The internationally renowned Shuswap Lake System is the dominating feature in the western half. Rivers and waterfalls, rain forests, evergreen forests and deciduous woodlands, dams, and thriving communities are but a sampling of what constitutes the CSRD. The Columbia Shuswap Film Commission represents the City of Revelstoke, City of Salmon Arm, District of Sicamous and smaller communities located in the rural Electoral Areas 'B' to 'F'.



Weather:

Environment Canada Weather Forecast 1-900-565-5555 (\$1.95/minute; 2 minute minimum)

www.weather.ec.gc.ca

City of Revelstoke

Revelstoke and Area, with an estimated population of 8,000, is rich in natural environmental beauty. Revelstoke is located within the Columbia Mountains in the Interior of British Columbia, 641 km east of Vancouver, B.C. and 415 km west of Calgary, Alberta. Situated on the Columbia River between the Selkirk and Monashee Mountain Ranges, Revelstoke has a spectacular setting on the main east-west transportation corridor through British Columbia. The Revelstoke area is generally considered to include the Rogers Pass and Glacier National Park to the east; Mica Creek and Kinbasket Lake to the north; Three Valley Gap to the west; and the northern part of Arrow Lakes including the Beaton-Trout Lake area, to the south.

1. PRIMARY CONTACT

A.) NAME: Adelheid Bender TEL: (250) 832-8194 RESPONSIBILITIES:
FAX: (250) 832-3375 Columbia Shuswap Film Commissioner

BUSINESS HOURS: 8 am to 4:30 pm Monday - Friday

MAILING ADDRESS: Box 978, Salmon Arm, British Columbia, V1E 4P1

Email: abender@csrd.bc.ca
Website: www.filmcolumbiashuswap.com

2. OTHER CONTACT PERSONS

B.) NAME: Ross McPhee City Administrator
TEL: (250) 837-2911
FAX: (250) 837-4930
EMAIL: rmcpee@cityofrevelstoke.com

Box 170, 216 Mackenzie Ave.,
Revelstoke, B.C. V0E 2S0

C.) NAME: Tim Luini City Bylaws & Building Inspector
TEL: (250) 837-3637
FAX: (250) 837-4930
EMAIL: tluini@cityofrevelstoke.com

D.) NAME: Debbie Williams Public Works
TEL: (250) 837-2001
FAX: (250) 837-2059
EMAIL:

E.) NAME: Alan Chell Parks and Recreation
TEL: (250) 837-9351
FAX: (250) 837-9355
EMAIL: achell@cityofrevelstoke.com

F.) NAME: Sgt. Jacquie Olsen RCMP
TEL: (250) 837-5255
FAX: (250) 837-4171

G.) NAME: Wade Rota Fire Chief
TEL: (250) 837-2884
EMAIL: wrota@cityofrevelstoke.com

H.) NAME: Dave Mair Revelstoke Airport Manager
TEL: (250) 837-7007

3. EMERGENCY NUMBERS

Police, Fire & Ambulance 911
BC Hydro 1-888-769-3766
Terasen Gas 1-800-663-9911
Queen Victoria Hospital 250 837-2131

REVELSTOKE WEATHER/GEOGRAPHICAL CHARACTERISTICS

Average Summer Temperatures	19° C / 70° F
Average Winter Temperatures	-5° C / 22° F
Average Annual Precipitation	611.8 mm / 24 inches
Average Annual Snowfall	448.2 cm / 176.4 inches
Latitude	N51°
Longitude	W118°
Elevation	455 meters / 1,490 feet

Weather forecast call 250 837-4164 or see www.weatheroffice.ec.gc.ca



City of Salmon Arm

Salmon Arm is located in the Shuswap-North Okanagan, the heart of beautiful British Columbia on the Trans Canada Highway, ideally located between Calgary to the east and Vancouver to the west and nestled on the shores of one of the largest most pristine lake systems in BC called Shuswap Lake. Outstanding natural beauty, clean waterways, provincial parks and an abundance of green space surrounds this world famous recreation area. Salmon Arm has a mild yet four season climate and superior year-round recreational amenities.

1. PRIMARY CONTACT

A.) NAME: Adelheid Bender TEL: (250) 832-8194 RESPONSIBILITIES:
FAX: (250) 832-3375 Columbia Shuswap Film Commissioner

BUSINESS HOURS: 8 am to 4:30 pm Monday - Friday

MAILING ADDRESS: Box 978, Salmon Arm, British Columbia, V1E 4P1

Email: abender@csrd.bc.ca
Website: www.filmcolumbiashuswap.com

2. OTHER CONTACT PERSONS

B.) NAME: Carl Bannister City Administrator
TEL: (250) 832-6061
FAX: (250) 832-5584
EMAIL: cbannister@salmonarm.ca

Box 40, 500 2nd Ave. NE
Salmon Arm, BC V1E 4N2

C.) NAME: Maurice Roy Manager of Permits and Licensing
TEL: (250) 832-6021
EMAIL: mroy@salmonarm.ca

D.) NAME: Dale McTaggart Engineering and Public Works Dept.
TEL: (250) 803-4020
EMAIL: dmctaggart@salmonarm.ca

E.) NAME: John Rosenberg Public Works, Utilities and Parks
TEL: (250) 803-4080
EMAIL: jrosenberg@salmonarm.ca

F.) NAME: Jerry Robertson Public Works & parks
TEL: (250) 803-4080
EMAIL: jrobertson@salmonarm.ca

G.) NAME: Sgt. Dave Williams RCMP
TEL: (250) 832-6044

H.) NAME: Brad Shirley Fire Chief
TEL: (250) 803-4060
EMAIL: bshirley@salmonarm.ca

I.) NAME: John McDermott Shuswap Regional Airport Manager
TEL: (250) 832-1000

3. EMERGENCY NUMBERS

Police, Fire, & Ambulance 911

BC Hydro 1-888-769-3766

Teresen Gas 1-800-663-9911

Shuswap Lake General Hospital 250 833-3600

SALMON ARM WEATHER/GEOGRAPHICAL CHARACTERISTICS

Average Summer Temperatures	19.4°C / 70° F
Average Winter Temperatures	-4.6° C / 24° F
Average Annual Precipitation	371.5 mm / 14.6 inches
Average Annual Snowfall	159.4 cm / 6.3 inches
Latitude	N50°
Longitude	119° W
Elevation	339 meters / 1,110 feet
Hours of Sunshine	1632 hours

Weather forecast see www.weatheroffice.ec.gc.ca



District of Sicamous

The District of Sicamous is located between Mara Lake and Shuswap Lake giving meaning to its logo "Gateway to the Shuswap". The scenic beauty of mountains and crystal lakes are an attraction to both residents and visitors. The area boasts four distinct seasons for outdoor enthusiasts. As the "Houseboat Capital of Canada", availability of over 200 rental houseboats makes Sicamous a favoured destination for visitors.

1. PRIMARY CONTACT

A.) NAME: Adelheid Bender TEL: (250) 832-8194 RESPONSIBILITIES:
FAX: (250) 832-3375 Columbia Shuswap Film Commissioner

BUSINESS HOURS: 8 am to 4:30 pm Monday - Friday

MAILING ADDRESS: Box 978, Salmon Arm, British Columbia, V1E 4P1

Email: abender@csrd.bc.ca
Website: www.filmcolumbiashuswap.com

2. OTHER CONTACT PERSONS

B.) NAME: Karen Williams City Administrator
TEL: (250) 836-2471
FAX: (250) 836-4314
EMAIL: kwilliams@sicamous.ca

Box 219, 1214 Riverside Ave.
Sicamous, BC V0E 2V0

C.) NAME: Lee Lundgren City Bylaws & Building Inspector
TEL: (250) 836-2477
FAX: (250) 836-4314
EMAIL: llundgren@sicamous.ca

D.) NAME: Grady McDonald Public Works
TEL: (250) 836-4105
FAX: (250) 836-2149
EMAIL: gmacdonald@sicamous.ca

E.) NAME: Doug Birk Recreation Centre
TEL: (250) 836-2283

F.) NAME: Sgt. Jim Harrison RCMP
TEL: (250) 836-2878

G.) NAME: Brett Ogino Fire Chief
TEL: (250) 836-2477
Cell: 250 309-2855
Email: ogino@telus.net

3. EMERGENCY NUMBERS

Police, Fire & Ambulance 911
BC Hydro 1-888-769-3766
Teresen Gas 1-800-663-9911

SICAMOUS WEATHER/GEOGRAPHICAL CHARACTERISTICS

Average Summer Temperatures	18.6° C / 65° F
Average Winter Temperatures	-3.5° C / 26° F
Average Annual Precipitation	457.5 mm / 18 inches
Latitude	N51°
Longitude	119°
Elevation	352 meters / 1155 feet

Weather forecast see www.weatheroffice.ec.gc.ca



RURAL AREAS WITHIN THE SHUSWAP

South Shuswap

This area of the Shuswap includes the communities of Balmoral, Blind Bay, Carlin, Eagle Bay, Notch Hill, Skimikin, Sorrento, Sunnybrae, Tappen, and White Lake. In the uniquely beautiful 'Heart of the Shuswap' conveniently located on the Trans Canada Highway you will find a recreation paradise. The South Shuswap embraces the southern shores of Shuswap Lake and boasts magnificent vistas northward with Copper Island as its centerpiece. Although long renowned for its recreation and retirement lifestyles, the area has much more to offer...scenic green landscapes, specialty hobby and traditional farms, light industry, forestry and a large artisan community. Summer and winter activities abound as a result of a very moderate climate. You will find opportunities for boating, fishing, swimming, hiking, cross country skiing and houseboating as well as access to a first-class championship golf course and two wineries.



North Shuswap

Located along the shoreline of Shuswap Lake, the communities include Lee Creek, Scotch Creek, Celistia, Magna Bay, Anglemont, St. Ives and Seymour Arm. The North Shuswap boasts more than 300 kilometers of unspoiled shoreline. With warm summer temperatures, ample sunshine and beautiful beaches, this area is a recreation paradise. A four-star First Nations lodge, built in an attractive native design, graces the shore of the Little Shuswap Lake. Numerous marine parks dot the shores for boaters' enjoyment. Set back from the shore are mountain ranges with ample snow in the winter for snowmobilers and great hiking and biking in the summer.



Falkland and Salmon Valley Areas

This area includes Falkland, Deep Creek, Rancho, Silver Creek and the Salmon Valley. Falkland is the largest centre, situated between Kamloops and Vernon on Highway 97. These communities are all located in long flat inland valleys with rolling hills, rivers and mountains. The surrounding forested hills are full of accessible fishing lakes, also offering excellent hiking, biking, cross-country skiing, snowmobiling and exploration. The area is famous for its rodeo in the spring.



Malakwa and Eagle Valley

The area has a number of small communities including Malakwa, Perry River, Solsqua/Cambie and Three Valley Gap. It is situated on the Trans Canada Highway between Sicamous and Revelstoke. In winter, the area has great snow covered mountains for snowmobiling and winter activities. Mountain biking and hiking are popular and the back country roads along the Eagle River provide a glimpse into the pristine wilderness. At Three Valley you will find a unique resort, western town, theatre, train cars, artifacts, and an impressive antique car collection. Just down the road is the Enchanted Forest with ancient trees and lush unique vegetation.



1. PRIMARY CONTACT

A.) NAME: Adelheid Bender TEL: (250) 832-8194 RESPONSIBILITIES:
FAX: (250) 832-3375 Columbia Shuswap Film Commissioner

BUSINESS HOURS: 8 am to 4:30 pm Monday - Friday

MAILING ADDRESS: Box 978, Salmon Arm, British Columbia, V1E 4P1

Email: abender@csrd.bc.ca
Website: www.filmcolumbiashuswap.com

2. OTHER CONTACT PERSONS

- B.) NAME: Alan Kuroyama City Administrator
TEL: (250) 832-8194
FAX: (250) 832-3375
EMAIL: Kuroyama@csrd.bc.ca
- D.) NAME: Jay Simons
Manager Development Services
TEL: (250) 832-8194
FAX: (250) 832-3375
EMAIL: jsimons@csrd.bc.ca
- E.) NAME: Doug Dymond
Manager Works Services
TEL: (250) 832-8194
FAX: (250) 832-3375
EMAIL: ddymond@csrd.bc.ca
- F.) NAME: Randy Cromartie
Building Inspector
TEL: (250) 832-8194
FAX: (250) 832-3375
EMAIL: rcromartie@csrd.bc.ca
- G.) NAME: Bob DuMont
Bylaw Enforcement Officer
TEL: (250) 832-8194
FAX: (250) 832-3375
EMAIL: bdumont@csrd.bc.ca
- H.) NAME: Jack Blair
Fire Services Co-ordinator
TEL: (250) 832-8194
FAX: (250) 832-3375
EMAIL: jblair@csrd.bc.ca

3. EMERGENCY NUMBERS

911

COLUMBIA SHUSWAP SERVICES

Area codes are 250 unless otherwise stated

Accommodation

North Shuswap

Anglemont Inn
Anglemont 955-0701

Quaaout Resort & Conference Centre
679-3090

Seymour Arm Hotel
Seymour Arm 804-6030

Revelstoke

Alpine Inn & Suites
1001 W 2nd St 837-2116

Best Western Wayside Inn
1901 Laforme Blvd 837-6161

Big Bend Motel
405 N Highway 23 837-6522

Canyon Motor Inn
1911 Fraser 837-5221

Cat Powder Skiing
201 W 2nd St 837-5151

Coast Hillcrest Resort Hotel
2100 Oak Drive 837-3322

Columbia Motel
1601 W 2nd St 837-2191

Frontier Motel
122 N Highway 23 837-5119

Hidden Motel
1855 Big Eddy 837-4240

Monashee Lodge
1601 W 3rd St 837-6778

Mountain View Motel
1017 W 1st St 837-4900

Peaks Lodge
Trans Canada Hwy 837-2176

Powder Springs Inn
201 W 2nd St 837-5151

R Motel
1500 W 1st St 837-2164

Regent Inn
112 E 1st St 837-2107

Revelstoke Lodge
601 W 1st St 837-2181

Sandman Inn
1891 Fraser 837-5271

Super 8 Motel
1700 W Victoria 837-0888

Swiss Chalet Motel
1101 Victoria 837-4650

Three Valley Lake Chateau
8903 Trans Canada Hwy 837-2109

Salmon Arm

Apple Grove Motel
6000 Trans Canada Hwy NE 832-6955

Best Western – Salmon Arm
61-10th St SW 832-9793

Cal Van Motel
4690 Trans Canada Hwy NE 832-7233

Holiday Inn Express
1090-22nd ST NE 832-7711

Podollan Inn
1460 Trans Canada Hwy 832-6025

Prestige Harbourfront Resort & Convention Centre
251 Harbourfront Drive NE 833-5800

Salmon River Motel
910 Trans Canada Hwy 832-3065

Super 8 Motel
2901 10th Ave 832-8812

Traveller's Rest Motel
6410 Trans Canada Hwy 832-3075

Travelodge Salmon Arm
2401 Trans Canada Hwy 832-9721

Village Motel
620 Trans Canada Hwy 832-3955

Sicamous

Abide With Inn
1321 Trans Canada Hwy 836-2546

Alpiner Motel
Trans Canada Hwy 836-2290

Best Western Sicamous Inn
806 Trans Canada Hwy E 836-4117

Cedars Motel
1210 Paradise 836-3175

Eagle View Motel
TransCanada Hwy 836-2703

Monashee Motel
517 Main St 836-2525

Paradise Motel
517 Main 836-2525

Pines Motel
473 Main 836-2556

Super 8 Motel – Sicamous
1122 Riverside Ave 836-4988

Sorrento

Shuswap Lake Motel
1185 Passchendaele 675-2420

Sorrento Inn
1277 Trans Canada Hwy 675-2454

Tappen

Sky Blue Waters Motel
Sunnybrae-Canoe Pt Rd 835-4531

Accounting Services

BDO Dunwoody LLP:
Revelstoke 837-5225
Salmon Arm 832-7171
Sicamous 836-4493
Sorrento 675-3288

Bueckert Cooper & Co, Salmon Arm 832-4007

CA & A Services, Celista 955-8177

Finch & Co, Salmon Arm 832-9737

J L McPherson, Blind Bay 675-3694

Jorgensen Drew Lee-Hai, Salmon Arm 832-7192

Ken Black Chartered Acct, Salmon Arm 832-6015

Ladouceur & Co, Salmon Arm 832-0562

M-Service General Accounting, Anglemont 955-2101

McKenzie Accounting, Revelstoke 837-3512

McMorland Ian, Sicamous 836-3111

MrPherson, J. L. Blind Bay 675-3694

Murray Rossworn & Co, Salmon Arm 832-5129

Air Freight

Silver Tip Aviation, Revelstoke
2813 Airport Way 837-4414

Aircraft Charter, Rental & Leasing

Advantage Helicopters, Salmon Arm
803-0275

Bear Air, Revelstoke 250 837-3538
Mobile: 250 837-1338

Canadian Helicopters Ltd.
Salmon Arm 832-9599

Kokanee Charter Service, Revelstoke 837-6288

Selkirk Mountain Helicopters, Revelstoke 837-2455

Shuswap Air, Salmon Arm 832-8830

Silver Tip Aviation, Revelstoke 837-4414

Westland Helicopters Inc. Salmon Arm 832-5828

Aircraft Fuel

Revelstoke Airport
2913 Airport Way 837-7007

Salmon Arm Airport
4300 20th Ave SE 832-1000

Airport Transportation

Cruiser Cab Co., Salmon Arm
3480 50th Ave NW 833-4617

White Rose Limousine Salmon arm
35551 16th Ave NE 832-4212

Airports & Airlines

Air Canada 1-888-247-2262

Westjet 1-800-538-5696

Kamloops Airport
3035 Airport Rd Kamloops V2B 7X1
376-3613

Kelowna International Airport
Suite 1, 5533 Airport Way Kelowna V1V 1S1
Airport Administration 1-250-765-5125

Revelstoke Airport
2913 Airport Way 837-7007

Shuswap Regional Airport
4300 20th Ave SE Salmon Arm 832-1000

All Terrain Vehicles

Backus Racing & Recreation, Mara
7615 Hwy 97A 838-7611

Big Eddy Sales & Rentals, Revelstoke
1021A Sandstone 837-4181

Boulder Mountain Sled Shed, Revelstoke
3278 Loschinski 814-0018

C & Ski Small Engine Works, Salmon Arm
2321 7th SW 833-4062

H2O Motor Sports, Sicamous
1314 Nordin Court 836-2541

Phoebe Ann Tours & Rentals, Sicamous
117 Finlayson 836-2220

Revelstoke ATV Tours
679 Westsyde Rd 837-9594

Shuswap Xtreme Recreation, Salmon Arm
1100 4 Ave SW 832-3883

Xcalibur Kawasaki, Salmon Arm
1200 Trans Canada Hwy SW 803-0111

Yamaha Sports Center, Salmon Arm
2750 Trans Canada Hwy SW 804-4334

Amusements/Entertainment/Recreation

Anglemont Golf Course
7838 Golf Course Rd 955-2323

Beardale Miniatureland 837-2109
28Km east of Sicamous Trans Canada Hwy

Canyon Hot Springs 837-2420
Trans-Canada Hwy, Revelstoke

Crazy Creek Falls 836-2838
30.5 km east of Sicamous Trans Canada Hwy

D Dutchmen Dairy, Sicamous 836-4304
1321 Maier Rd, petting zoo, ice cream

Enchanted Forest
7060 Trans Canada Hwy 837-9477

Frontier Mini Golf
Gill Rd, Sicamous 836-3140

Halcyon Hot Springs, Nakusp 265-3554

J Lanes Bowling
1901 9th Ave NE, Salmon Arm 832-3946

Jungle Mania
2450 10th Ave NE, Salmon Arm 803-0300

Narrows Village 836-2220
Cinnemousin Narrows on Shuswap Lake

Putt's Parlor Mini Golf & Ice Cream, Sorrento
Trans Canada Hwy 675-2766

Revelstoke Community Centre & Indoor Pool
600 Campbell Ave 837-9351

Revelstoke Dam
Hwy 23N 814-6697

Revelstoke Golf Course
171 Columbia Park Rd 837-4276

Salmon Arm Go-Karts & Mini-Golf
5980 Trans Canada Hwy NE 832-3177

Salmon Arm Recreation Centre 832-4044
2550 Trans Canada Hwy

Blackburn Park Skateboard Park, Salmon Arm

Scotch Creek Family Fun Center
4087 Squilax-Anglemont Rd 955-6100

Speed Way Fast Cars 836-4165
Trans Canada Hwy east of Sicamous

White Water RV Park Slide, Salmon Arm 832-8880
1001 Trans Canada Hwy

For more things to see and do go to:
www.shuswap.bc.ca

Animals – Training

Birch Valley Kennels Salmon Arm 832-4531

Canada West Canine Centre Salmon Arm 832-4541

Antique Dealers

Antiques & Curiosities, Sorrento
2806B Arnheim 675-4964

Antique Native Art At Thompson Lodge, Blind Bay
2420 Centennial 675-2111

Auntie's Attic Antiques n' Things, Revelstoke
201 MacKenzie Ave 837-2220

Country Classic Antiques, Revelstoke
313 MacKenzie Ave 837-5955

Eagle River Antiques, Malakwa
3884 Bertholm Rd 836-2607

Fancy That Antiques & Gifts, Salmon Arm
101 Hudson Ave NE 832-1135

First Street Antiques & Treasures, Revelstoke
1st St W 837-5066

Nanny's Attic & Emporium, Sicamous
Trans Canada Hwy & Rauma Rd 836-0003

Nifty Gifts, Celista
5432 Squilax-Anglemont Rd 955-0847

Oaklane Antiques, Salmon Arm
3430 1st Ave SW 804-0808

Rose Cottage, Sicamous
2012 Bundus Rd 836-2892

Ye Old Curiosity Shoppe, Salmon Arm
270 Alexander NE 833-1995

Appliances

City Furniture
1160 10th Ave SW, Salmon Arm 832-4373
111 Victoria Rd Revelstoke 837-3373

Crown's Appliances & Electronics, Salmon Arm
255 5th St SW 832-1977

The Brick, Salmon Arm
1701 10th Ave SW 832-5333

Arenas

Revelstoke Forum
837-9351

Sicamous Recreation Centre
836-2283

Sunwave Centre, Salmon Arm
2600 10th Ave NE 832-3856

Art Supplies/Crafts

Salmon Arm Stationery & Office Supplies
310 Hudson Ave NE 832-4261

Sorrento Office Services
675-3848

Autobody

Classic Collision & Restoration, Revelstoke
2100 Big Eddy Rd 837-6216

East End Auto Body, Revelstoke
1500 Powerhouse Rd 837-5504

McAllister Collision Ltd, Salmon Arm
631 Mallory Rd 832-2469

Power Auto Body, Tappen
507 Mobley 835-2353

Pro Body Shop, Salmon Arm
391 5th St SW 832-4097

Salmon Arm Frame & Body Shop, Salmon Arm
4841 1st Ave SW 832-8947

Shuswap Collision Centre, Salmon Arm
6515 Ave SW 832-9372

Sicamous Collision Repair, Sicamous
1233 Titus 836-3488
Tappen Valley Refinishing 833-5061

Vern's Custom Auto, Salmon Arm 833-0664

Bakery

Chalet Bakery & Delicatessen, Revelstoke
4158 Victoria Rd 837-4556

Penkert's Bakery, Salmon Arm
420 4th St NE 832-4010

Rahn's Bakery & Café, Salmon Arm
2-121 Shuswap NW 803-0011

Silver Hills Bakery, Tappen
2616 Hendrickson 835-2294

Banks & Credit Unions

BMO, Bank of Montreal, Salmon Arm
231 Trans Canada Hwy 832-7168

CIBC, Revelstoke
200 MacKenzie Ave 837-2151

CIBC, Salmon Arm
310 Alexander NE 833-3334

Royal Bank, Revelstoke
213 MacKenzie Ave 837-5133

Royal Bank, Salmon Arm
340 Alexander S 832-0871

Salmon Arm Savings & Credit Union:
391 Hudson Ave NE, Salmon Arm 833-3500
Shoppers' Plaza, Sorrento 675-2361

Scotia Bank, Salmon Arm
391 Hudson Ave NE 833-3500

TD Bank, Revelstoke
406 W 1st St 837-6900

TD Bank, Salmon Arm
391 Alexander NE 833-1350

Beer & Wine Stores

Balmoral Store, Tappen
3107 Trans-Canada Hwy 835-4335

Big Eddy Pub, Revelstoke
2108 Big Eddy Rd 837-6300

Blind Bay Country Market, Blind Bay
2688 Fairway Place 675-3464

Blind Bay Resort, Blind Bay
2698 Blind Bay Rd 675-2595

Brother's Beer & Wine Store, Sicamous
420 Main St 836-2800

Burner's Beer, Wine & Spirits, Sicamous
4270A Oxbow Frontage 836-4601

Cheers Beer & Wine Store, Revelstoke
109 E Victoria Rd 837-4550

Dixon's Cold Beer & Wine Spirits, Salmon Arm
200 Trans Canada Hwy 832-7087

Eagle Bay Store, Eagle Bay
4562 Eagle Bay Road 675-4465

Government Liquor Stores:
Revelstoke -111 Campbell Ave 837-7676
Salmon Arm – 111 Lakeshore Dr 832-1668
Sicamous – 309 Main 836-2218

Hideaway Liquor Store, Salmon Arm
973 Lakeshore SW 832-8829

Jigger's Cold Beer & Wine, Salmon Arm
551 Trans Canada Hwy, 804-7778

Last Call Liquor Store, Revelstoke
110 Boyle 837-4242

Mellor's Lucky Dollar Foods & Liquor, Salmon Arm
5939 Hwy 97B 832-6888

Moose Mulligans Marine Pub, Sicamous
1122 Riverside Ave 836-3603

Prestige Spirits, Beer and Wine Shoppe, Salmon Arm
251 Harbourfront Dr NE 833-5800

Setters Liquor Store, Salmon Arm
2950 11th Ave NE 832-0266

Shuswap Lake Park Store, Scotch Creek
4119 Squilax-Anglemont 955-2337

Sorrento Lucky Dollar Foods, Sorrento
1249 Trans Canada Hwy 675-2442

Bicycles Dealers & Rentals

Flowt Bikes & Skis, Revelstoke
709 Victoria Raod 837-4044

Rideteck Enterprises, Salmon Arm
311 Ross St NE 832-9811

Skookum Cycle, Salmon Arm
141 Shuswap 832-7368

Boat Renting & Leasing

Anglemont Marina, Celista
2559 Marina 955-2277

Bayshore Marina
2001 Eagle Bay Rd 675-2533

Blue Water Houseboats, Sicamous
110 Weddup 836-2255

Boathouse Marine, Salmon Arm
2670 Trans Canada Hwy 832-7515

Bolean Lake Lodge, Falkland
558-9008

Captain's Village Marina, Scotch Creek
955-2424 or 800-668-2628

Clare's Cove Marina, Canoe
5361 75th Ave NE 832-4944

Get Wet Rentals, Sicamous
1130 Riverside 836-3517

Indian Point Resort, Adams Lake
679-3441

Little River Boatworld, Sorrento
Trans Canada Hwy 675-2321

Magna Bay Cruises & Water Sports
955-6433

Phoebe Ann Rentals & Tours, Sicamous
Riverside Ave & Finlayson St 836-2220

Sea Dog Rentals
Sicamous 836-4406
Salmon Arm 804-4708

Seymour Arm Hotel
804-6030

Shuswap Marina, Sorrento
2127 Ingram Rd 675-2250

Sunbeach Rentals, Celista
2001 Evans Rd 955-0771

Twin Anchors Houseboats, Sicamous
Martin Street 836-2450

Towjammerz Enterprises, Sicamous
218 Finlayson St 836-0300

Waterway Houseboat Vacations, Sicamous
113 Weddup 836-25050

Building Supplies

Central Hardware, Salmon Arm
151 5th St SW 832-6011

Glacier Building Supplies, Revelstoke
96 Cartier 837-6144

Home Hardware, Salmon Arm
380 Alexander St NE 832-2166

Kozek Sawmills, Revelstoke
1792 Camozzi 837-6041

Parkland Building Supplies, Sicamous
1125 Eagle Pass Way 836-2514

R & S Sales & Rentals, Tappen
3913 Trans Canada Hwy 835-4554

Revelstoke Builders, Revelstoke
201 Campbell Ave 837-2185

Rona, Scotch Creek
3838 Squilax-Anglemont Rd 955-2119

Rona Revelstoke Home Centre, Salmon Arm
2430 Trans Canada Hwy 832-7044

Sorrento Hardware
1280 Trans Canada Hwy 675-4112

True Value, Sicamous
534 Main St. 836-4781

Buildings – Portable *see Trailers*

Bus Lines, Charters & Rentals

Greyhound Canada Passenger
Information 1-800-661-8747

Revelstoke Transit System
837-3888

Misty Mountain Motorcoach, Sicamous
804-9700

Shuswap Transit System 832-0191
Revelstoke Truck Centre 837-4810

Camera Rentals

Panavision in Vancouver
604 291-7262 or www.reelwest.com

Car Rentals

Avis Car and Truck Rental
1-800-437-0358

Budget Car & Truck Rentals, Salmon Arm
251 Harbour Front D NE 832-7333
Enterprise Rent-a-Car
1-866-799-7968

Hertz Canada
1-800-263-0600

National Car Rental, Salmon Arm
832-6066

Thrifty Car Rental, Revelstoke
1011 W Victoria Rd 837-4444

Thrifty Car Rental, Salmon Arr Airport 832-7774

Caterers *see Restaurants*

Cellular Phones

Futurity Wireless, Salmon Arm
132 360 TransCanada Highway 832-6858

Pacific Coastcom, Salmon Arm
Picadilly Mall 832-9392

Rogers Wireless, Salmon Arm
875 Lakeshore Dr SW 832-2239

Ross Communications, Salmon Arm
875 Lakeshore Dr SW 832-2239

Style Trend, Revelstoke
1st ST W 837-5606

TAC Mobility, Salmon Arr
40 Lakeshore Dr NE 833-1868

Clothing

Beer's Dept Store, Salmon Arm
330 Alexander NE 832-6253

Bootlegger, Salmon Arm
151-1151 10th Ave SW 832-8379

Buggerbee's Clothing, Salmon Arm
274-1151 10th Ave SW 833-1125

Crazy River Clothing, Salmon Arm
320 Alexander NE 832-5244

Daspy Fashions, Revelstoke
9-555 Victoria Rd 837-2269

Five Star Consignment, Revelstoke
301 MacKenzie Ave 837-6022

Growth Spurts, Salmon Arm
231 Alexander NE 833-5859

Happy Trails T Short Co, Sicamous
1233 TransCanada Hwy 836-0108

Heather Hut Boutique, Revelstoke
400 Mackenzie Ave 837-4163

JJ's Hemp Hollow, Salmon Arm
420 Trans Canada Hwy SW 833-1414

Kaos, Revelstoke
116 W 1st St 837-5707

Kid's Land Clothing & More, Salmon Arm
450 TransCanada Hwy SW 833-0101

Mariposa, Salmon Arm
442-360 Trans Canada Hwy 804-8828

Mark's Work Wearhouse, Salmon Arm
308-360 Trans Canada Hwy 832-9593

Quite the Pair, Revelstoke
302 W 1st St. 837-4111

Re-Lovable, Salmon Arm
170 McLeod NE 833-1913

Shuswap Clothing & Shoe, Salmon Arm
331 Alexander NE 832-2113

Style Trend Clothiers, Revelstoke
204 W 1st St 837-5606

Suzanne's, Salmon Arm
314-360 Trans Canada Hwy 832-2218

Wearabouts, Salmon Arm
350 Alexander NE 832-5100

Coffee Services & Coffee Bars

Ba Pauls Roadhouse Grill, Revelstoke
114 Mackenzie Ave. 837-9575

Conversations, Revelstoke
205 MacKenzie Ave 837-4772

Friends Rendesvous Bistro, Scotch Creek
4035 Squilax-Anglemont Rd 955-2297

Harbourfront Cafe, Salmon Arm
251 Harbourfront Dr 832-5312

Kafe Vienna, Falkland
5755 Hwy 97 379-2090

Kokopelli Internet Café, Celista
5231 Squilax-Anglemont Rd 955-0526

Main Street Café, Revelstoke
317 Mackenzie 837-6888

Ranch Café, Falkland
5752 Hwy 97 379-2677

Shuswap Coffee House, Scotch Creek
Squilax-Anglemont Rd 955-0200

Shuswap Perks, Salmon Arm
108-360 Trans Canada Hwy 804-2066

Tim Hortons:
Revelstoke, Trans Canada Hwy
Salmon Arm, 270 4th St NE 833-0584
Salmon Arm, 2931 9th Ave NE 833-1925
Sicamous, 814 Trans Canada Hwy 836-533

Woolsey Creek Café, Revelstoke
600 2nd St 837-5500

Computers

Clearview Computers, Revelstoke
111 E Victoria 837-6897

Computer Professionals, Salmon Arm
101-310 Hudson Ave NE 832-4286

Computer Ventures, Salmon Arm
6-111 Lakeshore Dr NE 804-4841

D & G Computers, Salmon Arm
112-151 10th Ave SW 832-0448

Keo Technologies, Salmon Arm
434-360 Trans Canada Hwy SW 833-5836

Keystroke Computer Service, Sicamous
836-5300

Myrevelstoke.com, Revelstoke
427 2nd St E 814-1044

Silicon Garden Computers, Salmon Arm
1-40 Lakeshore Dr NE 833-4328

Xana Network Systems, Salmon Arm
191 Shuswap NW 804-4365

Conference Centres

Holiday Inn Express Hotel, Salmon Arm
1090 22nd St NE 832-6159

Podollan Inn, Salmon Arm
1460 Trans Canada Hwy NE 832-6025

Prestige Harbourfront Resort & Convention Centre,
Salmon Arm
251 Harbourfront Rd NE 833-5800

Quaaout Lodge Resort
Little Shuswap Lake Rd 679-3090

Revelstoke Community Centre
Campbell Ave 837-9351

Salmon Arm Community Centre
2550 Hwy 1NE 833-5800

Sorrento Centre, Sorrento
1159A Passchendaele 675-3032

Sunwave Centre, Salmon Arm
2600 10th Ave NE 832-3856

Construction/Contractors

All Home Repairs by Norm Jewkes, Salmon Arm
803-1276

Blind Bay Holdings 675-3855

CDN Framing & Development, Salmon Arm 832-1503

Central Columbia Construction, Revelstoke 837-9338

Derrick Jolly Construction, Salmon Arm 832-7597

Elmco Construction, Salmon Arm 832-3165

Exel Construction, Salmon Arm 832-8181

Harder Ron Construction, Salmon Arm 832-0927

Hlina Construction, Sorrento 675-3430

KR Construction, Revelstoke 837-8824

McNally Bros., Tappen 835-4410

North Shore Construction, Celista 955-6505

Nu Trend Construction, Revelstoke 837-4533

Sandy Ridge Construction, Salmon Arm 833-7541

Sumo Construction, Sorrento 804-6898

Tybro Construction, Salmon Arm 832-0864

Willness Construction, Salmon Arm 832-8448

Costumes

Revelstoke Florist
107 W 2nd St 837-3194

Courier Service

A C E Courier Services:
Revelstoke 837-3046
Salmon Arm 832-4313

Canpar Transport 1-800-387-9335

Contact Courier, Sicamous 833-2580

FedEx Express 1-800 463-3339

Greyhound Canada:
Revelstoke, 1899 Fraser 837-5874
Salmon Arm, 50 10th St SW 832-3131
Sicamous, 322 Finlayson St 836-3233
Sorrento, 1235A Trans Canada Hwy 675-2328

Purolator Courier 1-888-744-7123
Tiger Courier 1-888-844-3724

UPS Canada 1-800-742-5877
Salmon Arm 833-4687

V & C Courier, Salmon Arm 832-3131

Crane Rentals

Buie Crane Service, Kamloops 573-3310

Eagle West Truck & Crane 1-877-374-1492

GWIL Crane Service 1-800-665-1977

Leko Precast, Salmon Arm
5241 Quto SE 803-0100

Rebel Boom Truck Service, Revelstoke
1118 W 2nd St 837-9418

Versatile Tree & Crane, Sicamous
909 Rauma Cres 836-3589

Crew

**Contact the Columbia Shuswap Film
Commission for an up-to-date list.**

Daycare Facilities

Jack & Jill Daycare, Salmon Arm 832-9027

Ladybug Landing Child Care Centre, Salmon Arm
832-5553

Playcare, Salmon Arm 832-3050

Revelstoke Childcare Society 837-6669

Shuswap Day Care Centre, Salmon Arm 832-6192

Shuswap Kids Club, Salmon Arm 832-7811

Stepping Stones Childcare, Revelstoke 837-5855

Delivery Services

A C E Courier Services, Salmon Arm 832-4313

Jade Line Holdings, Salmon Arm 832-8166

V & C Courier, Salmon Arm 832-3131

Dentists

Alexander Dental Centre, Salmon Arm
201-140 Alexander NE 833-1186

Chu Gerry Dr Inc, Salmon Arm
A-320 2 Av NE 832-7640

Kovalcik Elizabeth A Dr Inc, Salmon Arm
1151 SW 10 Ave 832-3626

Low Cedric Dr Inc, Salmon Arm
320 Ross St NE 832-2202

Revelstoke Dental Centre
111 W 2nd St 837-6231

Salmon Arm Dental Group
101 571 6 St NE 832-9401

Scotch Creek Dental Clinic
3-3874 Squilax-Anglemont 955-0075

Selkirk Dental Clinic, Revelstoke
314 Connaught 837-5149

Shuswap Dental Group, Salmon Arm
650 11 St NE 832-2264

Sicamous Dental Clinic, Sicamous
217 Finlayson 836-4737

Sorrento Dental Clinic
1223 Trans-Canada Hwy 675-4116

Department Stores

Beer's Department Store, Salmon Arm
330 Alexander NE 832-6253

Canadian Tire Store, Salmon Arm
2090 10th Ave SW 832-9600

Fields Stores:
Salmon Arm, 360 Trans Canada Hwy 832-9268
Revelstoke, 406 W 1st St 837-5433

Saan Stores:
Revelstoke, 415 Victoria Rd 837-3055

Zellers, Salmon Arm
1151 10th Ave SW 832-9371

Drycleaners & Laundry Facilities

Family Drycleaning Centre, Salmon Arm
80 Lakeshore Dr NE 832-7868

Family Laundry, Revelstoke
409 W 1st St 837-3938

Salmon Arm Drycleaners
454 Trans Canada Hwy SW 833-1470

Electric Equipment & Supplies

Baron Electric, Salmon Arm 832-7493

Blue Rock Electrical Contractors, Sicamous 836-3669

Cooper Electronics, Salmon Arm 832-8711

Home Hardware Stores, Revelstoke 837-2185
Home Hardware Stores, Salmon Arm 832-2166

Radio Shack, Revelstoke 837-2999

Revelstoke Plumbing & Electrical Supplies 837-2022

Torbram Electric Supply, Salmon Arm 832-7790

Valid Mfg. Salmon Arm 832-6477

Employment Services

Revelstoke Employment Services Centre
Campbell Ave 814-0244

Shuswap Employment Centre:
Salmon Arm 804-8870
Sicamous 836-3403

Work Search Centre:
Salmon Arm 804-8865
Sicamous 836-3406

Fabric Shops

Fabricland, Salmon Arm
121 Okanagan SE 832-7288

Just A Notion, Revelstoke
Mckenzie Ave 837-9350

Sewing Basket, Salmon Arm
168 McLeod NE 832-3937

Fax Services

The UPS Store, Salmon Arm
231 Trans Canada Hwy NE 833-4687

Wickett Business Services, Salmon Arm
310 Hudson Ave NE 832-4484

Film Equipment & Stock

Reel West Digest at 604 451-7335 or
www.reelwest.com

Kodak, Vancouver (raw film stock)
604 570-3526 or 1-800-621-3456

William F. White
(Grip and electric equipment)
Vancouver, 604 983-5300 or
1-800-663-1733

Fireworks

Mystical Distributing Co.
1-800-563-1110

First Aid Services

Occupational First Aid attendants
Association of BC 1-800-667-4566

Shuswap First Aid Services
Salmon Arm 832-4557

Florists

A Flower Shop, Salmon Arm

11 2 St SE 832-8388

All My Flowers, Salmon Arm
261 Alexander NE 832-1616

Bloom N' Tub, Salmon Arm
371 Hudson Ave NE 832-4272

Creative Flowers & Gifts, Revelstoke
12-555 Victoria Rd 837-6616

Dogwood Cottage Garden Shoppe, Revelstoke
411 W 1st St 837-5454

Flowers by Fimmy, Salmon Arm
701 Christensen SW 832-7700

Revelstoke Florist
107 W 2nd St 837-3194

Freight Brokers/Forwarding

Milestones Transport Agents, Salmon Arm
C-875 Lakeshore Dr 804-4801

Okanagan Shorthaul, Salmon Arm
5 Salmon River Rd 832-8075

Furniture

Blind Bay Furnishings (Log)
4529 Eagle Bay Rd 833-6199

City Furniture:
Revelstoke, 111 W Victoria 837-3373
Salmon Arm, 1371B 10th Ave SW 832-9700

Crown's Furniture, Salmon Arm
120 5th St SW 832-2205

United Furniture Warehouse,
Salmon Arm 1701 11th Ave SW
832-5333

Garbage Collection

Bresco Industries, Revelstoke 837-6650

C & J Sanitation, Salmon Arm 832-3059

Cheap Garbage Service, Salmon Arm 832-9292

Country Wide Disposal, Salmon Arm 832-4211

Jowen Contractors, Revelstoke 837-4680

Shuswap Garbage Disposal, Sorrento 675-5384

Winkler Disposal Systems, Salmon Arm 832-6295

Garden Centres & Nurseries

Bloomin' Backacher, Blind Bay
2466 Eagle Bay Rd 675-3355

Dogwood Cottage Garden Shoppe, Revelstoke
411 W 1st St 837-5454

Farm & Garden Place, Salmon Arm
1771 10th Ave SW 832-8424

Gleneden Landscape Conifers, Salmon Arm
1051 60th St SW 804-4301

Natural Choice Indoor Garden Center, Salmon Arm
1-5500 48 Ave SE 832-7151

Nico's Nurseryland, Salmon Arm
830 28th St NE 804-2004

North Shuswap Farm Garden & Pet Supply, Celista
1-3838 Squilax-Anglemont 955-0525

Skimikin Nursery, Tappen
935 Platt Rd 835-4541

Sorrento Nursery Ltd
1411 Kyte 675-4838

Tappen Valley Growers & Farm Service
1550 Tappen- Notch Hill Rd 835-8501

Generators

Big Eddy Sales & Rentals, Revelstoke
1021A Sandstone 837-4181

Custom Pumps & Electric
Motor Services, Tappen 833-7973

Geecoe Generator Servicing
Salmon Arm 832-8065

Kent Machinery, Salmon Arm
3-2650 13th Ave SW 832-1875

Woodsman Equipment & Rentals, Salmon Arm
1850 10th Ave SW 832-4045

Graphic Design

Design Works Graphics, Revelstoke 837-2825

Hucul Printing, Salmon Arm 832-5054

In House Graphics, Revelstoke 837-5953

Lakeside Printing, Salmon Arm 832-4431

Mediability, Salmon Arm 833-5554

Prima Design, Sicamous 836-4377

Toliver Advertising & Design, Salmon Arm 832-8261

Grocery Stores

Applewood Grocery, Sorrento
1232 Trans Canada Hwy 675-3906

Askew's Foods:
Salmon Arm, 111 Lakeshore DR NE 832-2064
Sicamous, 436 Main St 836-4899

Balmoral Store, Tappen
3107 Trans Canada Hwy 835-4335

Big Eddy Fuel Services, Revelstoke
1888 Big Eddy Rd 847-6680

Blind Bay Country Market, Blind Bay
2688 Fairway PI 675-3464

Bocci's Groceteria, Revelstoke
509 E 4th St 837-4180

Canoe General Store, Salmon Arm
7390 50 St NE 804-4800

Cooper's Foods, Revelstoke
5-555 Victoria Rd 837-4372

Eagle Bay Store, Sorrento
4562 Eagle Bay Rd 675-4465

Lukie's Store, Sicamous
222 Finlayson St 836-2533

Mac's Convenience Stores, Salmon Arm
71-2801 10th Ave NE 832-7226

Overwaita Foods:
Salmon Arm, 100-1151 10th Ave SW 832-2278

Redhawk Convenience Store, Sicamous
938 Trans Canada Hwy 836-4272

Scotch Creek Super Valu
3877 Squilax-Anglemont 955-2253

Shoppers Food Land, Sicamous
305 Main 836-2277

Silver Creek Store, Silver Creek
948 Salmon River Rd 832-4465

Sorrento Lucky Dollar Foods
1249 Trans Canada Hwy 675-2442

South Side Foot Mart, Revelstoke
900 4th St 837-3517

Sportsman's Blind Bay Store
2704 Blind Bay Rd 675-2046

Tripple Creek Mercantile, Sicamous
4270A Oxbow Frontage Rd 836-4700

Gyms/Fitness Centres

Body Effects, Salmon Arm
30 Lakeshore Dr NW 832-6789

Body Sense, Revelstoke
201 Victoria Rd 837-4433

Curves for Women:
Salmon Arm 400-251 Trans Canada Hwy 804-0644
Revelstoke 1-320 E 1st St 814-0288

Lifetime Fitness, Salmon Arm
2450 Trans Canada Hwy NE 833-4799

Rydell's Gym Health & Fitness, Blind Bay
H 2682 Fairway Hills 675-5377

Shuswap Core Pilates, Salmon Arm
2-661 Ross NE 804-0393

Trans Canada Fitness Inc, Revelstoke
501 W 2nd St 837-3440

Halls & Auditoriums

Aura Building, Revelstoke
413 W 2nd St 837-7480

Blind Bay Hall
2510 Blind Bay Rd 675-3139

Cambie Hall, Sicamous
2859 Cambie-Solsqua Rd 836-2987

Cedar Heights Community Association,
Sorrento, 2316 Lakeview 675-2012

Gleneden Community Hall, Salmon Arm
4901 50th Ave NW 832-6778

Revelstoke Community Centre
Campbell Ave 837-9351

Salmon Arm Community Centre
2550 Trans Canada Hwy 832-4044

White Lake Recreation Centre
3617 Parri, Tappen 835-2323

Hardware Stores

Central Hardware, Salmon Arm
151 5th St SW 832-6011

Home Hardware Building Centre, Celista
3906 Squilax-Anglemont 955-0203

Home Hardware Stores, Salmon Arm
380 Alexander St NE 832-2166

Revelstoke Builders, Revelstoke
311 Campbell Ave 837-2185

Sorrento Hardware
1280 Trans Canada Hwy 675-4112

True Value, Sicamous
534 Main St 836-4781

Health & Fitness Clubs *see Gyms*

Health Food Stores

HealthQuest, Salmon Arm
121 Hudson Ave NE 803-0388

Its All Good Bulk & Health Food Plus, Sorrento

F 2682 Fairway Hills 675-2828

Nature's Bounty, Sorrento
1266 Trans Canada Hwy 67-4323

Revelstoke Health Food Store
309 MacKenzie 837-4458

Shuswap Health Foods, Salmon Arm
115-1151 10 Ave SW 832-9998

Squilax General Store 7 Hostel
229 Trans Canada Hwy 675-2977

Helicopters

Canadian Helicopters Ltd:
Mica Creek 834-7333
Revelstoke 837-6226
Salmon Arm 832-9599

East West Transportation, Salmon Arm 833-4271

Kokanee Helicopters, Revelstoke 837-6288

Selkirk Mountain Helicopters, Revelstoke 837-2455

Tundra Helicopters Ltd, Revelstoke 837-5656

Westland Helicopters Inc, Salmon Arm 832-5828

Hospitals & Medical Clinics

Mount Ida Medical Clinic, Salmon Arm
200 Trans Canada Hwy SW 833-1990

Queen Victoria Hospital, Revelstoke
1200 Newlands 837-2131

Scotch Creek Medical Clinic, Celista
3874-2 Squilax-Anglemont Rd 955-0660

Shuswap Lake General Hospital, Salmon Arm
601 10th St NE 833-3600

Houseboat Rentals

Bluewater Houseboats, Sicamous 836-2255

Sun 'N' Fun Houseboats, Sicamous 836-2282

Three Buoys Houseboats, Sicamous 836-2403

Twin Anchors Houseboat Vacations, Sicamous
836-2450

Waterway Houseboats, Sicamous 836-2505

Internet Access

Airspeed Wireless Internet, Salmon Arm
4901 Auto Rd SE 832-9579

Clearview Computers, Revelstoke
111 E Victoria Rd 837-6897

Jetstream Internet Services, Salmon Arm
1151 10th Ave SW 832-0911

Revelstoke Chamber of Commerce
204 Campbell Ave 837-5345

Shuswap Internet Junction, Salmon Arm
10 Harbourfront NE 832-1912

Sicamous Cable & Internet
444A Main 836-3311

Sicamous Internet
1-231 Finlayson 836-3144

Sun Country Cablevision, Salmon Arm
10 Harbourfront NE 832-9711

Janitorial Services

Apex Janitorial Service, Revelstoke
837-4436

Detailed Maintenance & Repair, Salmon Arm
833-0565

Hydro-Force Cleaning Services, Salmon Arm 832-4706

Revelstoke Janitor Services 837-5534

Steadfast Cleaning Service, Salmon Arm 832-8642

Zack's Janitorial & Snowplowing, Salmon Arm
833-8207

Landscape/Gardening

Bobcat Bob, Sorrento 833-8003

Eric Reynard, Landscape Architect, Salmon Arm
832-1352

Castro's Landscape Contracting, Salmon Arm
515-0971

Cusson Tree Service, Salmon Arm 832-2392

Double D's Irrigation & Maintenance, Salmon Arm
833-0179

Gardening Gal, Salmon Arm 832-1352

Greenscape Landscaping & Bobcat Services
833-8751

Harper2 Landscaping, Salmon Arm 833-2723

Nico's Nurseryland, Salmon Arm 804-2004

Pete's Bobcat & Landscape Services, Salmon Arm
833-4900

Quest Mountain Contracting, Sicamous 836-4293

SPM Landscape Contractors, Revelstoke
837-3072

Thors Lawn & Yard Maintenance, Revelstoke 837-3751

Limousine Services

Salmon Arm Taxi
875B Lakeshore Drive NW 832-2252

White Rose Limousine, Salmon Arm
3551 16th Ave NE 832-4212

Liquor Stores

Balmoral Store, Tappen
3107 Trans-Canada Hwy 835-4335

Big Eddy Pub, Revelstoke
2108 Big Eddy Rd 837-6300

Blind Bay Country Market, Blind Bay
2688 Fairway Place 675-3464

Blind Bay Resort, Blind Bay
2698 Blind Bay Rd 675-2595

Brother's Beer & Wine Store, Sicamous
420 Main St 836-2800

Burner's Beer, Wine & Spirits, Sicamous
4270A Oxbow Frontage 836-4601

Cheers Beer & Wine Store, Revelstoke
109 E Victoria Rd 837-4550

Dixon's Cold Beer & Wine Spirits, Salmon Arm
200 Trans Canada Hwy 832-7087

Eagle Bay Store, Eagle Bay
4562 Eagle Bay Road 675-4465

Government Liquor Stores:
Revelstoke -111 Campbell Ave 837-7676
Salmon Arm – 111 Lakeshore Dr 832-1668
Sicamous – 309 Main 836-2218

Hideaway Liquor Store, Salmon Arm
973 Lakeshore SW 832-8829

Jigger's Cold Beer & Wine, Salmon Arm
551 Trans Canada Hwy, 804-7778

Last Call Liquor Store, Revelstoke
110 Boyle 837-4242

Mellor's Lucky Dollar Foods & Liquor, Salmon Arm
5939 Hwy 97B 832-6888

Moose Mulligans Marine Pub, Sicamous
1122 Riverside Ave 836-3603

Prestige Spirits, Beer and Wine Shoppe, Salmon Arm
251 Harbourfront Dr NE 833-5800

Setters Liquor Store, Salmon Arm
2950 11th Ave NE 832-0266

Shuswap Lake Park Store, Scotch Creek
4119 Squilax-Anglemont 955-2337

Sorrento Lucky Dollar Foods, Sorrento
1249 Trans Canada Hwy 675-2442

Locksmiths

Home Hardware Building Centre, Revelstoke
837-2185

Master Locksmith Services, Salmon Arm
832-7558

Sicamous Lock & Key 836-4445

Massage Therapy

A B C Massage Therapy, Salmon Arm
203-310 Hudson Ave NE 832-9651

Ansell Michelle, Revelstoke
300 W 3rd St 837-5646

Blind Bay Massage Therapy Clinic
J-2682 Fairway Hills 675-4748

Broadview Massage Therapy, Salmon Arm
351 20 St NE 833-1103

Cameron Suzie, Revelstoke
103-103 E 1st St 837-3666

Dora's Body Care, Salmon Arm
306-251 Trans Canada 804-4836

Newman Rozanna, Salmon Arm
321 Alexander NE 832-1041

Revelstoke Massage Therapy Clinic
301 E 1st St 837-6677

Routley Dean, Salmon Arm
200 Trans Canada Hwy SW 833-1990

Shuswap Massage Therapy Clinic, Salmon Arm
90 Lakeshore Dr NE 832-6988

Sicamous Massage Therapy
310 White Pine Cres 836-4643

Stevens Todd, Salmon Arm
B40 Alexander NE 833-1116

Tarnow's Hair & Day Spa, Salmon Arm
104-360 Trans Canada Hwy 832-9548

White Lake Massage & Hydrotherapy
Clinic, Tappen, 3813 Parri 835-2290

Motorcycles

Alpine Motor Sport, Salmon Arm
2750 Trans Canada Hwy SW 804-4334

Big Eddy Sales & Rentals, Revelstoke
1021A Sandstone 837-4181

H2O Motor Sports, Sicamous

1314 Nordin Crt 836-2541

Shuswap Xtreme Recreation, Salmon Arm
810 Trans Canada Hwy SW 832-3883

Xcalibur Kawasaki, Salmon Arm
1200 Trans Canada Hwy SW 803-0111

Yamaha Sports Centre, Salmon Arm
2750 Trans Canada Hwy SW 804-4224

Motor Homes/RVs

Eagle Homes, Salmon Arm
1885 Trans Canada Hwy 833-4728

Village West Countryside Mobile Home Sales
2571 Trans Canada Hwy SW, Salmon Arm
832-6699

Museums

BC Interior Forestry Museum,
Revelstoke, Hwy 23N 837-8078

Deep Creek Tool Museum, Deep Creek
832-2506

Revelstoke Nickelodeon Museum
111 1st St W 837-5250

R J Haney Heritage Park & Museum,
Salmon Arm
751 Highway 97B SE 832-5243

Revelstoke Railway Museum
719 W Track 837-6060

Sicamous & District Museum
Trans Canada Hwy 836-4456

Three Valley Lake Chateau, Revelstoke
8903 Trans Canada Hwy 837-2109

White Post Auto Museum, Tappen
4439B Trans Canada Hwy 835-2224

Musical Instruments

Acorn Music, Salmon Arm
118 Lakeshore Dr NE 832-8669

Blue Water Music Ltd, Salmon Arm
401-251 Trans Canada Hwy NW 832-0176

Newspapers

Eagle Valley News 836-2570

Friday Am, Salmon Arm 833-1141

Lakeshore News, Salmon Arm 832-9461

Revelstoke Times Review 837-4667

Revelstoke Unique 837-6007

Salmon Arm Observer 832-2131

Night Clubs

Livewire, Salmon Arm
351 Hudson Ave NE 832-0466

Rock Pit, Revelstoke
312 W 1st St 837-5799

Office Equipment/Furniture

Mi-Tec Millwork & Cabinetry, Salmon Arm
5230A 46th Ave SE 832-1524

Salmon Arm Stationery & Office Supplies
310 Hudson Ave NE 832-4261

Total Office Supply, Salmon Arm
103-371 Alexander NE 832-8622

Office Supplies

Hummingbird Press, Sicamous
1233 Trans Canada Hwy 836-4486

The UPS Store, Salmon Arm
Trans Canada Hwy 833-4687

Salmon Arm Stationery & Office Supplies
310 Hudson Ave NE 832-4261

Total Office Supply, Salmon Arm
103-371 Alexander NE 832-8622

Paging, Calling & Signaling

Rogers AT&T Wireless 1-800-268-1087

Telus Mobility 1-800-663-2455

Paint & Supplies

Benjamin Moore, Salmon Arm
300A-251 Trans Canada Hwy NW
833-1410

Central Hardware Ltd., Salmon Arm
151 5th St SW 832-6011

Color Your World, Salmon Arm
120 Okanagan SE 832-8100

Expressive Interior Designs, Revelstoke
3-320 E 1st St 837-5785

General Paint Corp, Revelstoke
96 Cartier 837-6144

Paint Depot, Salmon Arm
41-2801 10 Ave NE 832-4010

Parkland Building Supplies, Sicamous
1125 Highway 97A 836-2514

Revelstoke Builders, Revelstoke
311 Campbell 837-2185

Rona Revelstoke Home Centre, Salmon
Arm 2430 Trans Canada Hwy SW

832-7044

Sorrento Hardware, Sorrento
1280 Trans Canada Hwy 675-4112

Pharmacy

Eagle Valley IDA Pharmacy
317 Main St Sicamous 836-2963

IDA Prescription Centre, Salmon Arm
581 Hudson Ave NE 804-0711

Munro's Sorrento Prescriptions
1250 Trans Canada Hwy 675-4411

Peoples Drug Mart, Revelstoke
12-555 Victoria Rd 837-5191

Peoples Drug Mart, North Shuswap
1-3874 Squilax Anglemont 955-0601

Pharmasave, Revelstoke
307 W Victoria Rd 832-2028

Pharmasave, Salmon Arm
270 Hudson Ave NE 832-2111

Safeway Pharmacy, Salmon Arm
360 Trans Canada Hwy SW 832-1080

Shoppers Drug Mart, Salmon Arm
Piccadilly Place Mall 832-2181

Photographers

Evan Batke, Revelstoke 837-7471

Craig Pulsifer, Salmon Arm 832-1343

Photo Finishing

Foto Shoppe, Salmon Arm
212-360 Trans Canada Hwy 832-7784

Peoples Drug Mart, Revelstoke
12 -555 Victoria Rd 837-5191

Pharmasave, Salmon Arm
270 Hudson Ave 832-7123

Photo House, Revelstoke
307 MacKenzie 837-3142

Village The, Sicamous
533 Main 836-2222

Post Production

Vancouver Post Production facilities offer the latest in post technology. Multiformat on-line and non-linear edit suites; computer animation, FX systems, digital sound design, multimedia and visual effects are just some of the services offered. www.reelwest.com

There are some facilities in Kelowna and Kamloops as well.

Printers

Brushstrokes Signs & Awnings, Salmon Arm 601 3rd Ave SW 832-7707

Big Bear Publishing, Salmon Arm
201-121 Hudson Ave 832-2388

Canadian Photoscene, Salmon Arm
601 3rd Ave SW 832-6606

Hucul Printing, Salmon Arm
4-471 5th St SW 832-5054

Hummingbird Press, Sicamous
1233 Trans Canada Hwy 836-4486

Lakeside Printing, Salmon Arm
81 Shuswap NW 832-4431

Popular Print, Salmon Arm
431 Hudson Ave NE 832-3253

Revelstoke Printing, Revelstoke
204 W 1st St 837-3822

Production Companies

see www.reelwest.com

Production Services

www.reelwest.com

www.bcinteriorfilm.com

www.tranquilleonthelake.com

Promotional Products

Canadian Photoscene, Salmon Arm
601 3rd Ave SW 832-6606

Promo West Promotional Products, Salmon Arm
B-2450 10th Ave NE 832-1063

Smart Imprinting, Salmon Arm
285 5th St SW 832-3377

Propane Gas

Canwest Propane, Sicamous
1006 MacLean-McPherson 836-5322

Scotch Creek Esso, Scotch Creek
955-0868

Sicamous Esso, Sicamous
913 MacLean-McPherson 836-3230

Supersave Propane, Revelstoke
Hwy 23N

Radio Communication Equipment

Dale's Communications, Tappen 835-8660

Denbil Radio, Salmon Arm 832-2545

Glacier Communications, Revelstoke 837-3764

Kennedy Sales – Communications, Tappen 833-9595

Omega Communications, Salmon Arm 832-4330

Radio Stations

CBC Radio
Radio One and Radio Two
604 662-6000 www.cbc.ca

CKCR Radio, Revelstoke
208 1st St E 837-2148
CKXR Radio, Salmon Arm
360 Ross St NE 832-2161

Recording & Editing

Powerzone Recording Studio
Salmon Arm 832-0176

Salmon River Studio 1-888-213-7877

Recreation Centres

Downtown Activity Centre, Salmon Arm
451 Shuswap SW 832-0108

O A P O 165, Sorrento
1148 Passchendaele Rd 675-5358

Revelstoke Community Centre & Pool
Campbell Ave. 837-9351

Salmon Arm Community Centre
2550 Trans Canada Hwy 832-4044

Sunwave Centre, Salmon Arm
2600 10th Ave NE S 832-3856

Recycling Centre & Services

Community Connections Recycling Depot, Revelstoke
2-99 MacPherson 837-5660

DNA Enterprises, Tappen
Tappen Stn Rd 835-4687

M & J Recycling Inc, Revelstoke
1600 Poerhouse Rd 837-9283

Mydepot.ca:
Revelstoke Bottlers, 97 Cartier St 837-2693

Salmon Arm, Bill's Bottle Depot
90 Lakeshore Dr SW 832-0669
2840 13th Ave SW 832-6630

Sicamous, Bottle Shop 322 Finlayson 836-3233

S S R Bottle Depot, Sorrento
2-1255 Trans Canada Hwy 675-3777

Rentals – Equipment

Action Sales & Rentals, Sicamous
914 Trans Canada Hwy 836-3800

Big Eddy Sales & Rentals, Revelstoke

1031A Sandstone 837-4181

BPL Industries, Salmon Arm
4321 10th Ave SE 832-7529

Cardinal Equipment, Salmon Arm
1670 10th Ave SW 833-0064

Elmco Construction, Salmon Arm
1171 10th St SW 832-3165

R & S Sales & Rentals, Tappen
3913 Trans Canada Hwy 835-4554

Revelstoke Equipment Rentals
210 Highway 23N 837-5144

Shuswap Building Supplies & Rentals, Scotch Creek,
3838 Squilax-Anglemont Rd 955-2119

Woodsman Equipment & Rentals, Salmon Arm
1850 10th Ave SW 832-4045

Resorts *see Accommodation*

Restaurants

Falkland

Falkland Pub
5747 Hwy 97 379-2143

Kafe Vienna
5755 Hwy 97 379-2090

Ranch Café
5752 Hwy 97 379-2677

Whispering Pines Restaurant
3765 Whispering Pines Frontage Rd 279-2644

North Shuswap

Creekside Restaurant, Scotch Creek
Family Fun Centre 955-6110

Finz Bar & Grill, Scotch Creek
1054 Wharf Rd 955-0900

North Shore Inn, St. Ives
2781 Southwind Rd 955-6210

Quaaout Lodge Resort
Little Shuswap Lake Rd 679-3090

Ronni's Cafe, Scotch Creek
4144 Squilax Anglemont 955-2229

Scotch Creek Family Fun Center
4087 Squilax Anglemont Rd 955-6100

Shuswap Coffee House, Scotch Creek
4025 Squilax Anglemont 955-0200

Revelstoke

Bad Paul's Roadhouse Grill
114 MacKenzie 837-9575

Best Western Wayside Inn
1901 Laforme Blvd 837-6161

Claudio's Pizza & Pasta
206 Mackenzie 837-6743

Denny's Restaurant
1891 Fraser 837-2034

Emo's Pizza & Steak
418 W 1st St 837-6443

Frisby Ridge Teriyaki
201A W 1st St 837-5449

Frontier
122 N Highway 23 837-5119

Great White North Bar & Grill
3251 Weird Woods Frontage 837-3495

Grizzly Sports Bar & Grill
314 1st St W 837-5576

Henry's Restaurant
109 E 1st St 837-5355

Hillcrest Hotel
2100 Oak 837-3322

Hong Kong Restaurant
113 Mackenzie Ave 837-2360

Magpie & Stump Restaurant
306 MacKenzie 837-4067

Manning's Restaurant
302 MacKenzie Ave 837-3200

Peaks Lodge
Trans Canada Hwy 837-2176

Regent Inn
112 E 1st St 837-2107

Scotty's
1840 Trans Canada Hwy 837-4464

Tony's Roma
306 MacKenzie 837-4106

W K Garden
119 MacKenzie 837-2082

Woolsey Creek Café
600 2nd St 837-5500

Zala's Steak & Pizza
1601 Victoria 837-5555

Salmon Arm

Boston Pizza
251 Trans Canada Hwy NW 833-1151

Carri's Restaurant

202-360 Trans Canada Hwy 832-5560

Chiang Mai Orchid Restaurant
131 Hudson Ave NE 832-0699

Country Kitchen
5270 Auto SE 832-8848

Famous Yan's Restaurant
800 NE 21 St 832-3007

Forster's Restaurant
251 Harbour Front Dr NE 833-1154

Grand Pillars Restaurant
1460 Trans Canada Hwy NE 833-5696

Hanna's Cookhouse
200 Trans Canada Hwy SW 832-4268

Herb Garden Restaurant & Catering Co
111 Lakeshore Dr NE 833-4983

Home Restaurant
2801 Trans Canada Hwy NE 832-9991

Ironwood Restaurant, Golf Club
3641 Highway 97B 832-3773

Jade Buffet
100 Trans Canada Hwy 832-8632

Jane's Place
140-1151 10th St SW 832-5582

Joey's Only Seafood Restaurant
2401B Trans Canada Hwy 833-1188

KFC
230 Ross NE 832-2860

Little Caesar's Pizza
81 Shuswap NW 832-9996

Little Tokyo Japanese Kitcher
351 Alexander St NE 832-8109

Ming's Garden Restaurant
271 Ross St NE 832-1038

Minos Greek House
720 22nd St NE 832-2079

Panago Pizza
360 Trans Canada Hwy 310-0001

PJs Family Restaurant
530 Trans Canada Hwy SW 832-1566

Primavera Ristorante Italiano
260 Ross St NE 833-0065

Rio Grande Mexican
331 Hudson Ave NE 804-4748

Subway
250 Trans Canada Hwy NE 832-5092

Tripple 0s Restaurant (White Spot)
101 Trans Canada Hwy NE 832-7931

Wing's Kitchen
21 Shuswap NW 832-1982

Yan's Restaurant
880 21 St NE 832-3007

Sicamous & Malakwa Area
Alpiner
Trans Canada Hwy 832-4906

Burner Bar & Grill
4260 Oxbow Frontage 836-4600

Eagle Pass Landing
1221 Eagle Pass Way 836-3500

Jade Stone Inn
1213 Highway 97A 836-4646

Lakeshore Fish & Chips
302 Finlayson 836-3474

Maggie's Diner
433 Main St 836-3030

Michelle's Restaurant
6-1133 Hwy 97A 836-3112

Moose Mulligans Marine Pub
1122 Riverside Ave 836-3603

Sicamous Husky
1340 Trans Canada Hwy 836-4413

Skyline Truck Stop
5507 Trans Canada Hwy 836-4949

Welcome Inn
1310 Trans Canada Hwy 836-2140

South Shuswap
Blind Bay Café Marina & Rentals
2001 Eagle Bay 675-2533

Duffer's Den Lounge, Blind Bay
2405 Centennial 675-2510

Goldpanner Restaurant, Tappen
5177 Trans Canada Hwy 835-8822

Home Restaurant, Sorrento
1235C Trans Canada Hwy 675-3552

Log'n Hearth Restaurant, Blind Bay
2406 Centennial 675-4433

Toby's Restaurant, Sorrento
1258 Trans Canada Hwy 675-4464

Trickle Inn, Tappen
5290 Trans Canada Hwy 835-8835

Saddlery, Riding Apparel, Tack & Equipment

Selkirk Saddle Club, Revelstoke
1447 Airport Way 837-7115

Safety Equipment

Air Liquide, Salmon Arm
877 771-0727

Can-Swe Distributors, Salmon Arm
4461 20th St NE 832-4022

Centuryvallen, Revelstoke
207 4th St 837-6221

Woodman Equipment & Rentals, Salmon Arm
1850 10th Ave SW 832-4045

School District 19 - Revelstoke

Arrow Heights Elementary 837-6360
Columbia Park Elementary 837-4744
Mount Begbie Elementary 837-4056
Mountain View Elementary 837-3320
Revelstoke Secondary 837-2173

School District 83

Bastion Elementary, Salmon Arm
832-3741
Carlin Elementary, Tappen 835-4520
Eagle River Sec., Sicamous 836-2731
Hillcrest School, Salmon Arm 832-7195
Malakwa Elementary School 836-2757
North Canoe Elementary 832-4950
North Shuswap Elementary School 955-2214
Parkview Elem., Sicamous 836-2871
Ranchero Elementary 832-7018
Salmon Arm Elementary 832-7071
Salmon Arm Senior Sec. 832-2188
Salmon Arm West Elem. 832-3862

Secretarial Services/Placement

Arnica Consultants, Revelstoke 837-6888

Office Connections 835-8355

Wickett Business Services, Salmon Arm 832-4484

Security Guard & Patrol Services

Summit Security Group, Kamloops 376-4644

Shopping Centres/Malls

Alpine Village Shopping Centre, Revelstoke
414 W 1st St W 837-2609

Centenoka Park Mall, Salmon Arm
360 Trans Canada Hwy SW 832-9731

Piccadilly Place Mall, Salmon Arm
1151 10th Ave SW 832-0441

Signs, Banners & Billboards

A & M Stained Glass & Signs, Revelstoke
423 E 5th St 837-6598

Amadeus Art Productions, Revelstoke
217 MacKenzie 837-2747

Brushstrokes Signs & Awnings,
Salmon Arm 441 7th St W 832-7714

High Impact Signs & Graphics, Salmon Arm
30 11th St SE 371-2653

L A Sign Shop, Salmon Arm
1370 4th Ave SE 832-8598

Showcase Awards & Recognition, Salmon Arm 854
Lakeshore Dr SW 832-7335

Sign Works, Salmon Arm 832-6707

Signs Ink, Revelstoke
4188 W 2nd St 837-2633

Station Signs & Graphics, Sorrento
2816 Arnheim Rd 675-3444

3M Trim-Line Autographics & Signs, Revelstoke
801 E 4th St 837-3219

Ski Centres & Resorts

Canadian Mountain Holidays,
Revelstoke 837-4204

Cat Powder Skiing, Revelstoke
201 W 2nd St 837-5111

Powder Springs Resort, Revelstoke
3030 Camozzi Rd, 837-3199

Revelstoke Mountain Resort
204B W 1st St (office) 814-0087

Selkirk Tangiers Helicopter Skiing
Revelstoke 2100 Oak Dr 837-5378

Snowmobiles

Backus Racing & Recreation, Mara
838-7611

Big Eddy Sales & Rentals, Revelstoke
1021A Sandstone 837-4181

Boulder Mountain Sled Shed, Revelstoke
3278 Loschinski 814-0018

Captain's Village Marina, Scotch Creek
955-2424

Great Canadian Snowmobile Tours, Revelstoke
679 Westsyde 837-9594

H20 Motor Sports, Sicamous

1214 Nordin Crt 836-2541

J B Marine, Sicamous
202 Finlayson 836-4370

Keystone Machine, Revelstoke
312 Townley 837-9505

Mac's Machine, Sicamous
1213 Riverside Ave 836-3648

Queest Mountain Rentals, Sicamous
1117 Solsqua Rd 833-6433

Revelstoke Snowmobile & Service
722 Begbie Rd 837-9394

Revelstoke Snowmobile Tours
1051A Sandstone 837-5200

Shuswap Xtreme Recreation, Salmon Arm
810 Trans Canada Hwy SW 832-3883

Super Sport Cycle Centre, Salmon Arm
810 Trans Canada Hwy 832-3883

Yamaha Sports Center, Salmon Arm
1750 Trans Canada Hwy SW 804-4334

Stages *see also Theatres*

William F White, Calgary
1-800-661-8383

Storage Facilities

AAA Mini Storage, Salmon Arm
431 42nd St SW 832-3558

ABC Mini & RV Storage, Salmon Arm
331 42nd St SW 932-0212

Auto Rd Self Storage, Salmon Arm
5421 Auto Rd SE 832-3997

BPL Mobile Storage, Salmon Arm
4321 10 Ave SE 832-7529

Kam's 5R's Mini Storage, Sorrento
2806 Arnheim 675-4964

Lakeside Storage, Sicamous
709 Riverside 836-3443

Mobile Storage, Salmon Arm
4321 10th Ave SE 832-7529

Mur's Movin' & Storage, Salmon Arm
4321 45 St SE 832-9782

North Shuswap Storage Resort, Celista
1337 Cardy 955-0788

Notch Hill Rd Storage
1315 Notch Hill 675-4098

Revelstoke Mini Storage

2400 Boulder 837-8073

Scotch Creek Storage
3970 Squilax Anglemont 955-6177

Sea-Dog Marina, Sicamous
918 riverside Ave 836-4406

Southside Mini Storage, Salmon Arm
5351 46th Ave SE 833-1442

Storage Place, Sicamous
625 Trans Canada Frtg 836-4592

Super Self Storage, Salmon Arm
4750 40th Ave SE 803-0030

Trans Canada Highway Mini Storage, Salmon Arm
6550 Trans Canada Hwy NE 832-5565

Studios

12th Street Studio, Kamloops
#1-1157 12th St 554-2780
40x40x16 (sound proof & insulated)
40x40x16 (divider wall removable)
loading bay; ample parking; carpentry
area; security
Vancouver Studios previous sections

Taxi

Cruiser Cab Co, Salmon Arm
833-4617

Eagle Valley Taxi, Salmon Arm
833-2082

Johnnie's Taxi, Revelstoke
837-3000

R Taxi, Revelstoke 837-4450

Salmon Arm Taxi, 832-2252

Taxi (Water)

Pirate Water Taxi, Sicamous
517-7527

Seawalker Angling, Sicamous
836-4287

Sicamous Water Taxi & Tours
836-4318

Television Dealers & Rentals

City Furniture
Revelstoke, 111 W Victoria 837-3470
Salmon Arm, 1160 10 Ave SW 832-9770

Crown's Appliances & Electronics, Salmon Arm
255 5th St SW 832-1977

Intense Audio Video, Revelstoke
315 MacKenzie 837-9495

Television Stations & Broadcast Companies

CHBC Okanagan Television
342 Leon, Kelowna 762-4535

CTV BC
Vancouver 604 608-2868

Lake Broadcasting Corp, Sorrento
6-1257 Trans Canada Hwy 675-4888

Lakeshore TV Ad Productions, Salmon Arm
804-2021

Revelstoke Cable TV
418 W 2nd St 837-5246

Sicamous Cable & Internet
444A Main 836-3311

Sun Country Cablevision, Salmon Arm
10 Harbourfront NE 832-9711

Theatres – Live

Mt. Mackenzie Playhouse, Revelstoke
Comozzi Rd 837-3687

Shuswap Theatre Society, Salmon Arm
41 Hudson Ave NW 832-9283

Theatres - Movie

Roxy Theatre, Revelstoke
115 Mackenzie 837-5540

Salmar Classic Theatre, Salmon Arm
360 Alexander NE 832-2773

Salmar Grand Cinemas, Salmon Arm
100 Hudson St NW 832-2263

Thrift/Second Hand Stores

Churches of Salmon Arm Used Goods, Salmon Arm
481 Beatty NW 832-8234

Five Star Consignment, Revelstoke
301 Mackenzie 837-6022

Good Samaritan Boutique, Salmon Arm
410 5th St SW 832-3555

Shuswap Pawn, Salmon Arm
171 Hudson Ave 832-9921

Toilet-Portable Rentals

Al & Sons Septic Service, Scotch Creek 955-2547

Reliable Septic Services, Salmon Arm 832-8404

Revelstoke Equipment Rentals 837-5144

Revelstoke Septic & Portable Rentals 837-6619

Trigs Septic Service, Sicamous 836-2952

Towing

A 1 Big Johns Columbia Towing, Revelstoke 837-9381

A Plus Auto Towing, Sicamous 836-0333

Ben's Towing & Auto Wrecking Salmon Arm 832-6512

Central Automotive Service & Towing, Salmon Arm
832-8656

Classic Towing, Revelstoke 837-6216

Columbia Towing, Revelstoke 837-9391

Jimco Towing Ltd, North Shuswap 319-5250

North Shuswap Towing, Sorrento 675-3597

Sicamous & Eagle Valley Towing 836-2000

Sorrento Towing & Recovery 833-7722

Westside Towing, Salmon Arm 832-9776

Traffic Control Services & Equipment

Cayoosh Contracting, Salmon Arm 833-4990

Dee's Pro Traffic Control, Tappen 835-8359

Trailers – Portables

ATCO Structures Inc 1-800 575-2826

GE Capital Modular Space 1-800-451-3951

J C Office Trailers, Kelowna 1-888 559-1349

St. David's Church Thrift Store, Celista 670-3944

Travel Agencies

Bayview Travel, Salmon Arm
Trans Canada Hwy SW 832-0383

Red Cap Travel, Revelstoke
202 Campbell Ave 837-6131

Thomas Cook Travel, Salmon Arm
351 Alexander NE 832-9481

Unicorn Travel, Salmon Arm
351 Alexander NE 832-9481

Uniglobe Lake Country Travel, Salmon Arm
145-1151 10th Ave SW 833-0312

Trucks & Vans, Rentals & Leasing

Auto Rd Self Storage, Salmon Arm
541 Auto Rd SE 832-3997

Budget Car & Truck Rental Salmon Arm
251 Harbour Front Dr NE 832-7333

Stan's Auto Repair & Rental
Salmon Arm, 400 7th St SW 832-3005

Thrifty Car Rental, Revelstoke
1011 W Victoria Rd 837-4444

U-Haul:
Salmon Arm 7th St SW 832-7876

Video Equipment/Production/Services

Ron Marchand The Video Man, Salmon Arm 832-3320

Pak-Man Digital Productions, Salmon Arm 833-4533

Shuswap Electronics, Salmon Arm
875 Lakeshore DR SW 832-2888

Water Coolers & Bottled Water

Advanced Water Conditioning, Salmon Arm 832-0515

Iroquois West Bottling, Revelstoke 837-4461

O K Drink'n Water Shops, Salmon Arm 804-4840

Revelstokes Own Water & Ice Store 837-4459

Three Valley Mountain Spring Water 837-4449

Water Pure & Simple Salmon Arm 832-1130

Water Hauling Services

Booth A D Trucking, Salmon Arm 832-2020

Bresco Industries, Revelstoke 837-6650

Diamond C Ventures, Tappen 835-8218

Welding & Fabrication

Denkurt Enterprises, Salmon Arm 832-3103

Kennedy Welding, Tappen 833-9595

Metal Craft & Welding, Salmon Arm 832-4975

Milestone Fabrication, Salmon Arm 832-6008

Monashee Welding, Revelstoke 837-6151

Mount Begbie Machine Works, Revelstoke 837-4177

Mt Ida Fabricators, Salmon Arm 832-7216

Shagg's Welding, Sorrento 675-4045

Steelhead Machine & Fabrication, Salmon Arm
832-1161

Tri-Power Technologies, Salmon Arm 832-2160

Wells Machine, Salmon Arm 833-1010

Wright Machine Works, Revelstoke 837-5034

Wigs & Toupees

Nu-Reflections, Kelowna 763-0442

Woodworking/Furniture

Scotch Creek Woodwork 955-0405



The Columbia Shuswap